



NATIONAL POWER CORPORATION

MinGen

PHILIPPINE BIDDING DOCUMENTS
(Procurement of INFRASTRUCTURE PROJECTS)

FOR

CONSTRUCTION OF WHARF WITH
INTEGRATED 702 MASL ELEVATION
MARKER AT BRGY.LUMBACAWATO,
BALINDONG, LANA O DEL SUR

P.R. No.: MG-COM22-020

Contracts Management Office
Logistics Division

Sixth Edition
July 2020
Rev. 2

TABLE OF CONTENTS

GLOSSARY OF.....	4
TERMS, ABBREVIATIONS, AND ACRONYMS.....	4
SECTION I. INVITATION TO BID.....	7
SECTION II. INSTRUCTIONS TO BIDDERS.....	11
1. Scope of Bid.....	12
2. Funding Information.....	12
3. Bidding Requirements.....	12
4. Corrupt, Fraudulent, Collusive, Coercive, and Obstructive Practices.....	13
5. Eligible Bidders.....	13
6. Origin of Associated Goods.....	13
7. Subcontracts.....	13
8. Pre-Bid Conference.....	14
9. Clarification and Amendment of Bidding Documents.....	14
10. Documents Comprising the Bid: Eligibility and Technical Components.....	14
11. Documents Comprising the Bid: Financial Component.....	15
12. Alternative Bids.....	15
13. Bid Prices.....	15
14. Bid and Payment Currencies.....	15
15. Bid Security.....	15
16. Sealing and Marking of Bids.....	16
17. Deadline for Submission of Bids.....	16
18. Opening and Preliminary Examination of Bids.....	16
19. Detailed Evaluation and Comparison of Bids.....	16
20. Post Qualification.....	17
21. Signing of the Contract.....	17
SECTION III. BID DATA SHEET.....	18
SECTION IV. GENERAL CONDITIONS OF CONTRACT.....	22
1. Scope of Contract.....	23
2. Sectional Completion of Works.....	23
3. Possession of Site.....	23
4. The Contractor's Obligations.....	23
5. Performance Security.....	24

6.	Site Investigation Reports.....	24
7.	Warranty	24
8.	Liability of the Contractor	24
9.	Termination for Other Causes.....	26
10.	Dayworks	25
11.	Program of Work	25
12.	Instructions, Inspections and Audits.....	25
13.	Advance Payment	25
14.	Progress Payments	26
15.	Operating and Maintenance Manuals	26
	SECTION V. SPECIAL CONDITIONS OF CONTRACT	27
	SECTION VI. SPECIFICATIONS.....	29
	SECTION VII. DRAWINGS.....	46
	SECTION VIII. BILL OF QUANTITIES.....	64
	SECTION IX. CHECKLIST OF TECHNICAL AND FINANCIAL DOCUMENTS	66
	FORM OF BID SECURITY (SURETY BOND).....	73
	CONTRACTOR'S ORGANIZATIONAL CHART FOR THE CONTRACT	76
	JOINT VENTURE AGREEMENT.....	90
	BID FORM	92
	SUMMARY SHEETS OF MATERIALS PRICES, LABOR RATES AND EQUIPMENT RENTAL RATES	95

Glossary of Terms, Abbreviations, and Acronyms

ABC—Approved Budget for the Contract.

ARCC – Allowable Range of Contract Cost.

BAC – Bids and Awards Committee.

Bid – A signed offer or proposal to undertake a contract submitted by a bidder in response to and in consonance with the requirements of the bidding documents. Also referred to as *Proposal* and *Tender*.(2016 revised IRR, Section 5[e])

Bidder – Refers to a contractor, manufacturer, supplier, distributor and/or consultant who submits a bid in response to the requirements of the Bidding Documents. (2016 revised IRR, Section 5[d])

Bidding Documents – The documents issued by the Procuring Entity as the bases for bids, furnishing all information necessary for a prospective bidder to prepare a bid for the Goods, Infrastructure Projects, and/or Consulting Services required by the Procuring Entity. (2016 revised IRR, Section 5[e])

BIR – Bureau of Internal Revenue.

BSP – Bangko Sentral ng Pilipinas.

CDA – Cooperative Development Authority.

Consulting Services – Refer to services for Infrastructure Projects and other types of projects or activities of the GOP requiring adequate external technical and professional expertise that are beyond the capability and/or capacity of the GOP to undertake such as, but not limited to: (i) advisory and review services; (ii) pre-investment or feasibility studies; (iii) design; (iv) construction supervision; (v) management and related services; and (vi) other technical services or special studies. (2016 revised IRR, Section 5[i])

Contract – Refers to the agreement entered into between the Procuring Entity and the Supplier or Manufacturer or Distributor or Service Provider for procurement of Goods and Services; Contractor for Procurement of Infrastructure Projects; or Consultant or Consulting Firm for Procurement of Consulting Services; as the case may be, as recorded in the Contract Form signed by the parties, including all attachments and appendices thereto and all documents incorporated by reference therein.

Contractor – is a natural or juridical entity whose proposal was accepted by the Procuring Entity and to whom the Contract to execute the Work was awarded. Contractor as used in these Bidding Documents may likewise refer to a supplier, distributor, manufacturer, or consultant.

CPI – Consumer Price Index.

DOLE – Department of Labor and Employment.

DTI – Department of Trade and Industry.

Foreign-funded Procurement or Foreign-Assisted Project –Refers to procurement whose funding source is from a foreign government, foreign or international financing institution as specified in the Treaty or International or Executive Agreement. (2016 revised IRR, Section 5[b]).

GFI – Government Financial Institution.

GOCC –Government-owned and/or –controlled corporation.

Goods – Refer to all items, supplies, materials and general support services, except Consulting Services and Infrastructure Projects, which may be needed in the transaction of public businesses or in the pursuit of any government undertaking, project or activity, whether in the nature of equipment, furniture, stationery, materials for construction, or personal property of any kind, including non-personal or contractual services such as the repair and maintenance of equipment and furniture, as well as trucking, hauling, janitorial, security, and related or analogous services, as well as procurement of materials and supplies provided by the Procuring Entity for such services. The term “related” or “analogous services” shall include, but is not limited to, lease or purchase of office space, media advertisements, health maintenance services, and other services essential to the operation of the Procuring Entity. (2016 revised IRR, Section 5[r])

GOP – Government of the Philippines.

Infrastructure Projects – Include the construction, improvement, rehabilitation, demolition, repair, restoration or maintenance of roads and bridges, railways, airports, seaports, communication facilities, civil works components of information technology projects, irrigation, flood control and drainage, water supply, sanitation, sewerage and solid waste management systems, shore protection, energy/power and electrification facilities, national buildings, school buildings, hospital buildings, and other related construction projects of the government. Also referred to as *civil works or works*. (2016 revised IRR, Section 5[u])

LGUs – Local Government Units.

NFCC – Net Financial Contracting Capacity.

NGA – National Government Agency.

PCAB – Philippine Contractors Accreditation Board.

PhilGEPS - Philippine Government Electronic Procurement System.

Procurement Project – refers to a specific or identified procurement covering goods, infrastructure project or consulting services. A Procurement Project shall be described, detailed, and scheduled in the Project Procurement Management Plan prepared by the agency which shall be consolidated in the procuring entity's Annual Procurement Plan. (GPPB Circular No. 06-2019 dated 17 July 2019)

PSA – Philippine Statistics Authority.

SEC – Securities and Exchange Commission.

SLCC – Single Largest Completed Contract.

UN – United Nations.

BID DOCUMENTS

NAME OF PROJECT: Construction of Wharf with Integrated 702 Masl
Elevation Marker at Brgy. Lumbacawato, Balindong,
Lanao del Sur

SECTION I- INVITATION TO BID

PR NO/REF. NO.: MG-CDM22-020/INFR2022-CDD-039

Section I. Invitation to Bid





NATIONAL POWER CORPORATION

MinGen

Invitation to Bid for Construction of Wharf with Integrated 702 Masl Elevation Marker at Brgy. Lumbacawato, Balindong, Lanao Del Sur

1. The *NATIONAL POWER CORPORATION-MINDANAO GENERATION*, through the approved *Corporate Budget of NPC for CY 2022* intends to apply the sum of *Two Million Nine Hundred Eighty Seven Thousand One Hundred Fifty Three and 34/100 Pesos (PHP2,987,153.34)* being the Approved Budget for the Contract (ABC) to payments under the contract for *Construction of Wharf with Integrated 702 Masl Elevation Marker at Brgy. Lumbacawato, Balindong, Lanao del Sur (INFRA2022-CDD-039)*. Bids received in excess of the ABC shall be automatically rejected at bid opening.
2. The *NATIONAL POWER CORPORATION-MINDANAO GENERATION* now invites bids for the above Procurement Project. Completion of the Works is required *Ninety (90) calendar days*. Bidders should have completed a contract similar to the Project. The description of an eligible bidder is contained in the Bidding Documents, particularly, in Section II (Instructions to Bidders).
3. Bidding will be conducted through open competitive bidding procedures using non-discretionary "*pass/fail*" criterion as specified in the 2016 revised Implementing Rules and Regulations (IRR) of Republic Act (RA) No. 9184.
4. Interested bidders may obtain further information from *BAC Secretariat, NATIONAL POWER CORPORATION-MINDANAO GENERATION* and inspect the Bidding Documents at the address given below from *8:00 AM – 5:00 PM Monday to Friday*.
5. A complete set of Bidding Documents may be acquired by interested Bidders on *July 20 – August 09, 2022* from the given address and website(s) below and upon payment of the applicable fee for the Bidding Documents, pursuant to the latest Guidelines issued by the GPPB, in the amount of *Three Thousand Pesos (PHP 3,000.00)*. The Procuring Entity shall allow the bidder to pay online and present its proof of payment for the fees *in person, by facsimile, or through electronic means*. *For those prospective bidders who wish to pay online, below are the details of the account:*

LandbankAccount name : NPC GENCO 5 COLLECTIONS FUND
LandbankAccount number : 0321-1689-14

It may also be downloaded free of charge from the website of the Philippine Government Electronic Procurement System (PhilGEPS) provided that Bidders shall pay the applicable fee for the Bidding Documents not later than the submission of their bids.

6. The *NATIONAL POWER CORPORATION-MINDANAO GENERATION* will hold a Pre-Bid Conference on *July 26, 2022 at 9:00 AM* at *Bidding Room, NPC-Mindanao Generation Headquarters, Maria Cristina, Iligan City* and/or through videoconferencing/webcasting via *ZOOM*, which shall be open to prospective bidders. Interested online attendees are required to pre-register one (1) day before the scheduled pre-bidding conference. For pre-registration, contact tel. no. (063)-222-3459 or email logistics_afd_mingen@napocor.gov.ph.
7. Bids must be duly received by the BAC Secretariat through manual submission at the office address as indicated below, on or before *August 09, 2022 at 9:30 AM*. Late bids shall not be accepted.
8. All bids must be accompanied by a bid security in any of the acceptable forms and in the amount stated in ITB Clause 15.
9. Bid opening shall be on *August 09, 2022 at 9:30 AM* at the *Bidding Room, NPC-Mindanao Generation Headquarters, Maria Cristina, Iligan City*. Bids will be opened in the presence of the bidders' representatives who choose to attend the activity.
10. *This project requires submission of at least:*
 - *Certificate of Site Inspection*
11. The *NATIONAL POWER CORPORATION-MINDANAO GENERATION* reserves the right to reject any and all bids, declare a failure of bidding, or not award the contract at any time prior to contract award in accordance with Sections 35.6 and 41 of the 2016 revised Implementing Rules and Regulations (IRR) of RA No. 9184, without thereby incurring any liability to the affected bidder or bidders.
12. For further information, please refer to:
BAC Secretariat
Contracts Management Office
Logistics Division
Mindanao Generation Headquarters
National Power Corporation
Maria Cristina, Iligan City
logistics_afd_mingen@napocor.gov.ph
Tel. No.: (063)222-3459
Fax No.: (063)223-8355/(063)223-4604
www.napocor.gov.ph

13. You may visit the following websites:

For downloading of Bidding Documents: <https://www.philgeps.gov.ph/> or
<https://www.napocor.gov.ph/BCSD/bids.php>



ATTY. ALEX A. MACABANGKIT
Vice Chairman, Bids and Awards Committee
Mindanao Generation Headquarters

Date of PhilGEPS Publication: 20 July 2022

Section II. Instructions to Bidders

1. Scope of Bid

The Procuring Entity, **NATIONAL POWER CORPORATION-MINDANAO GENERATION** invites Bids for the *Construction of Wharf with Integrated 702 Mast Elevation Marker at Brgy. Lumbacawato, Balindong, Lanao del Sur, with Project Identification Number INFRA2022-CDD-039.*

The Procurement Project (referred to herein as "Project") is for the construction of Works, as described in Section VI (Specifications).

2. Funding Information

- 2.1. The GOP through the source of funding as indicated below for CY 2022 in the amount of *Three Million Pesos (PHP3,000,000.00).*
- 2.2. The source of funding is:
 - a. GOCC and GFIs, the proposed Corporate Operating Budget.

3. Bidding Requirements

The Bidding for the Project shall be governed by all the provisions of RA No. 9184 and its 2016 revised IRR, including its Generic Procurement Manual and associated policies, rules and regulations as the primary source thereof, while the herein clauses shall serve as the secondary source thereof.

Any amendments made to the IRR and other GPPB issuances shall be applicable only to the ongoing posting, advertisement, or invitation to bid by the BAC through the issuance of a supplemental or bid bulletin.

The Bidder, by the act of submitting its Bid, shall be deemed to have inspected the site, determined the general characteristics of the contracted Works and the conditions for this Project, such as the location and the nature of the work; (b) climatic conditions; (c) transportation facilities; (c) nature and condition of the terrain, geological conditions at the site communication facilities, requirements, location and availability of construction aggregates and other materials, labor, water, electric power and access roads; and (d) other factors that may affect the cost, duration and execution or implementation of the contract, project, or work and examine all instructions, forms, terms, and project requirements in the Bidding Documents.

4. Corrupt, Fraudulent, Collusive, Coercive, and Obstructive Practices

The Procuring Entity, as well as the Bidders and Contractors, shall observe the highest standard of ethics during the procurement and execution of the contract. They or through an agent shall not engage in corrupt, fraudulent, collusive, coercive, and obstructive practices defined under Annex "I" of the 2016 revised IRR of RA No. 9184 or other integrity violations in competing for the Project.

5. Eligible Bidders

- 5.1. Only Bids of Bidders found to be legally, technically, and financially capable will be evaluated.
- 5.2. The Bidder must have an experience of having completed a Single Largest Completed Contract (SLCC) that is similar to this Project, equivalent to at least fifty percent (50%) of the ABC adjusted, if necessary, by the Bidder to current prices using the PSA's CPI, except under conditions provided for in Section 23.4.2.4 of the 2016 revised IRR of RA No. 9184.

A contract is considered to be "similar" to the contract to be bid if it has the major categories of work stated in the BDS.

- 5.3. For Foreign-funded Procurement, the Procuring Entity and the foreign government/foreign or international financing institution may agree on another track record requirement, as specified in the Bidding Document prepared for this purpose.
- 5.4. The Bidders shall comply with the eligibility criteria under Section 23.4.2 of the 2016 IRR of RA No. 9184.

6. Origin of Associated Goods

There is no restriction on the origin of Goods other than those prohibited by a decision of the UN Security Council taken under Chapter VII of the Charter of the UN.

7. Subcontracts

- 7.1. The Bidder may subcontract portions of the Project to the extent allowed by the Procuring Entity as stated herein, but in no case more than fifty percent (50%) of the Project.

The Procuring Entity has prescribed that:

- a. Subcontracting is not allowed.

8. Pre-Bid Conference

The Procuring Entity will hold a pre-bid conference for this Project on the specified date and time and either at its physical address and/or through videoconferencing/webcasting as indicated in paragraph 6 of the IB.

9. Clarification and Amendment of Bidding Documents

Prospective bidders may request for clarification on and/or interpretation of any part of the Bidding Documents. Such requests must be in writing and received by the Procuring Entity, either at its given address or through electronic mail indicated in the IB, at least ten (10) calendar days before the deadline set for the submission and receipt of Bids.

10. Documents Comprising the Bid: Eligibility and Technical Components

- 10.1. The first envelope shall contain the eligibility and technical documents of the Bid as specified in Section IX. Checklist of Technical and Financial Documents.
- 10.2. If the eligibility requirements or statements, the bids, and all other documents for submission to the BAC are in foreign language other than English, it must be accompanied by a translation in English, which shall be authenticated by the appropriate Philippine foreign service establishment, post, or the equivalent office having jurisdiction over the foreign bidder's affairs in the Philippines. For Contracting Parties to the Apostille Convention, only the translated documents shall be authenticated through an apostille pursuant to GPPB Resolution No. 13-2019 dated 23 May 2019. The English translation shall govern, for purposes of interpretation of the bid.
- 10.3. A valid PCAB License is required, and in case of joint ventures, a valid special PCAB License, and registration for the type and cost of the contract for this Project. Any additional type of Contractor license or permit shall be indicated in the BDS.
- 10.4. A List of Contractor's key personnel (e.g., Project Manager, Project Engineers, Materials Engineers, and Foremen) assigned to the contract to be bid, with their complete qualification and experience data shall be provided. These key personnel must meet the required minimum years of experience set in the BDS.
- 10.5. A List of Contractor's major equipment units, which are owned, leased, and/or under purchase agreements, supported by proof of ownership, certification of availability of equipment from the equipment lessor/vendor for the duration of the project, as the case may be, must meet the minimum requirements for the contract set in the BDS.

11. Documents Comprising the Bid: Financial Component

- 11.1. The second bid envelope shall contain the financial documents for the Bid as specified in Section IX. Checklist of Technical and Financial Documents.
- 11.2. Any bid exceeding the ABC indicated in paragraph 1 of the IB shall not be accepted.
- 11.3. For Foreign-funded procurement, a ceiling may be applied to bid prices provided the conditions are met under Section 31.2 of the 2016 revised IRR of RA No. 9184.

12. Alternative Bids

Bidders shall submit offers that comply with the requirements of the Bidding Documents, including the basic technical design as indicated in the drawings and specifications. Unless there is a value engineering clause in the BDS, alternative Bids shall not be accepted.

13. Bid Prices

All bid prices for the given scope of work in the Project as awarded shall be considered as fixed prices, and therefore not subject to price escalation during contract implementation, except under extraordinary circumstances as determined by the NEDA and approved by the GPPB pursuant to the revised Guidelines for Contract Price Escalation guidelines.

14. Bid and Payment Currencies

- 14.1. Bid prices may be quoted in the local currency or tradeable currency accepted by the BSP at the discretion of the Bidder. However, for purposes of bid evaluation, Bids denominated in foreign currencies shall be converted to Philippine currency based on the exchange rate as published in the BSP reference rate bulletin on the day of the bid opening.
- 14.2. *Payment of the contract price shall be made in:*
 - a. Philippine Pesos.

15. Bid Security

- 15.1. The Bidder shall submit a Bid Securing Declaration or any form of Bid Security in the amount indicated in the BDS, which shall be not less than the percentage of the ABC in accordance with the schedule in the BDS.
- 15.2. The Bid and bid security shall be valid until *One Hundred Twenty (120) Calendar Days from the Scheduled Bid Opening.* Any bid not accompanied

by an acceptable bid security shall be rejected by the Procuring Entity as non-responsive.

16. Sealing and Marking of Bids

Each Bidder shall submit one copy of the first and second components of its Bid.

The Procuring Entity may request additional hard copies and/or electronic copies of the Bid. However, failure of the Bidders to comply with the said request shall not be a ground for disqualification.

If the Procuring Entity allows the submission of bids through online submission to the given website or any other electronic means, the Bidder shall submit an electronic copy of its Bid, which must be digitally signed. An electronic copy that cannot be opened or is corrupted shall be considered non-responsive and, thus, automatically disqualified.

17. Deadline for Submission of Bids

The Bidders shall submit on the specified date and time and either at its physical address or through online submission as indicated in paragraph 7 of the IB.

18. Opening and Preliminary Examination of Bids

18.1. The BAC shall open the Bids in public at the time, on the date, and at the place specified in paragraph 9 of the IB. The Bidders' representatives who are present shall sign a register evidencing their attendance. In case videoconferencing, webcasting or other similar technologies will be used, attendance of participants shall likewise be recorded by the BAC Secretariat.

In case the Bids cannot be opened as scheduled due to justifiable reasons, the rescheduling requirements under Section 29 of the 2016 revised IRR of RA No. 9184 shall prevail.

18.2. The preliminary examination of Bids shall be governed by Section 30 of the 2016 revised IRR of RA No. 9184.

19. Detailed Evaluation and Comparison of Bids

19.1. The Procuring Entity's BAC shall immediately conduct a detailed evaluation of all Bids rated "*passed*" using non-discretionary pass/fail criteria. The BAC shall consider the conditions in the evaluation of Bids under Section 32.2 of 2016 revised IRR of RA No. 9184.

19.2. If the Project allows partial bids, all Bids and combinations of Bids as indicated in the BDS shall be received by the same deadline and opened and evaluated simultaneously so as to determine the Bid or combination of Bids offering the lowest calculated cost to the Procuring Entity. Bid Security as

required by ITB Clause 16 shall be submitted for each contract (lot) separately.

- 19.3. In all cases, the NFCC computation pursuant to Section 23.4.2.6 of the 2016 revised IRR of RA No. 9184 must be sufficient for the total of the ABCs for all the lots participated in by the prospective Bidder.

20. Post Qualification

Within a non-extendible period of five (5) calendar days from receipt by the Bidder of the notice from the BAC that it submitted the Lowest Calculated Bid, the Bidder shall submit its latest income and business tax returns filed and paid through the BIR Electronic Filing and Payment System (eFPS), and other appropriate licenses and permits required by law and stated in the BDS.

21. Signing of the Contract

The documents required in Section 37.2 of the 2016 revised IRR of RA No. 9184 shall form part of the Contract. Additional Contract documents are indicated in the **BDS**.

BID DOCUMENTS

NAME OF PROJECT: Construction of Wharf with Integrated 702 Masl
Elevation Marker at Brgy. Lumbacawato, Balindong,
Lanao del Sur

SECTION III- BID DATA SHEET

PR NO./REF. NO.: MG-COM22-020/INFR2022-CDD-039

Section III. Bid Data Sheet

Bid Data Sheet

ITB Clause																				
5.2	For this purpose, contracts similar to the Project refer to contracts which have the same major categories of work, which shall be: Construction of Wharf or Dams or River Embankment																			
7.1	Subcontracting is not allowed.																			
10.3	None																			
10.4	<p>The key personnel must meet the required minimum years of experience set below:</p> <table border="1" style="width: 100%; border-collapse: collapse;"> <thead> <tr> <th style="text-align: left;"><u>Key Personnel</u></th> <th style="text-align: left;"><u>General Expertise</u></th> <th style="text-align: left;"><u>Relevant Experience</u></th> </tr> </thead> <tbody> <tr> <td>1 - Project Engineer</td> <td>Licensed Civil Engineer</td> <td>At least five (5) years experience in related works</td> </tr> <tr> <td rowspan="3">1 - Construction Foreman</td> <td>B.S. Civil Engineering Graduate</td> <td>At least three (3) years experience in similar works</td> </tr> <tr> <td>Civil Engineering Technology Graduate</td> <td>At least five (5) years experience in similar works</td> </tr> <tr> <td>Non-graduate</td> <td>At least five (5) years working experience as Construction Foreman in similar works</td> </tr> <tr> <td>1 - Construction Safety and Health Officer (SO2)</td> <td>Construction Safety Officer 2</td> <td>At least forty (40) hours of Construction Safety and Health (COSH) Training from Occupational Safety and Health Center (OSHC) or Safety Training Organizations (STOs) accredited by the Department of Labor and Employment (DOLE). Must be present during the whole duration of the project)</td> </tr> <tr> <td>1 - Welder</td> <td></td> <td>At least three (3) years experience in welding/cutting works</td> </tr> </tbody> </table>	<u>Key Personnel</u>	<u>General Expertise</u>	<u>Relevant Experience</u>	1 - Project Engineer	Licensed Civil Engineer	At least five (5) years experience in related works	1 - Construction Foreman	B.S. Civil Engineering Graduate	At least three (3) years experience in similar works	Civil Engineering Technology Graduate	At least five (5) years experience in similar works	Non-graduate	At least five (5) years working experience as Construction Foreman in similar works	1 - Construction Safety and Health Officer (SO2)	Construction Safety Officer 2	At least forty (40) hours of Construction Safety and Health (COSH) Training from Occupational Safety and Health Center (OSHC) or Safety Training Organizations (STOs) accredited by the Department of Labor and Employment (DOLE). Must be present during the whole duration of the project)	1 - Welder		At least three (3) years experience in welding/cutting works
<u>Key Personnel</u>	<u>General Expertise</u>	<u>Relevant Experience</u>																		
1 - Project Engineer	Licensed Civil Engineer	At least five (5) years experience in related works																		
1 - Construction Foreman	B.S. Civil Engineering Graduate	At least three (3) years experience in similar works																		
	Civil Engineering Technology Graduate	At least five (5) years experience in similar works																		
	Non-graduate	At least five (5) years working experience as Construction Foreman in similar works																		
1 - Construction Safety and Health Officer (SO2)	Construction Safety Officer 2	At least forty (40) hours of Construction Safety and Health (COSH) Training from Occupational Safety and Health Center (OSHC) or Safety Training Organizations (STOs) accredited by the Department of Labor and Employment (DOLE). Must be present during the whole duration of the project)																		
1 - Welder		At least three (3) years experience in welding/cutting works																		

	<p>(1) Valid Professional Regulation Commission (PRC) license for professional personnel; (2) Certificate of Training with accreditation from DOLE for the Construction Safety & Health Officer; and (3) Diploma and/or Service Record/Certificate of Employment of previous and/or current employer for Project Engineer, Construction Foreman and Welder <i>shall be submitted and included as an attachment in the Standard Form NPCMGNSF-INFR-05: List of Key personnel Proposed to be Assigned to the Contract.</i></p> <p>Project Engineer or Foreman and Construction Safety & Health Officer maybe one person, as long as he meets the requirements of the two positions. Provided however, that there is no overlapping of projects undertaken by the same contractor and supervised by the same person.</p> <p>The above key personnel must be either employed by the applicant or contracted by the applicant to be employed for the contract to be bid.</p>															
<p>10.5</p>	<p>The minimum major equipment requirements are the following:</p> <table border="1" data-bbox="411 882 1316 1088"> <thead> <tr> <th><u>Equipment</u></th> <th><u>Capacity</u></th> <th><u>Number of Units</u></th> </tr> </thead> <tbody> <tr> <td>Plate Compactor</td> <td>5 HP or 2 tons</td> <td>One (1)</td> </tr> <tr> <td>Concrete Mixer</td> <td>1-Bagger</td> <td>One (1)</td> </tr> <tr> <td>Concrete Vibrator, Pen Type</td> <td>2 HP</td> <td>One (1)</td> </tr> <tr> <td>Welding Machine</td> <td>300 Amp.</td> <td>One (1)</td> </tr> </tbody> </table>	<u>Equipment</u>	<u>Capacity</u>	<u>Number of Units</u>	Plate Compactor	5 HP or 2 tons	One (1)	Concrete Mixer	1-Bagger	One (1)	Concrete Vibrator, Pen Type	2 HP	One (1)	Welding Machine	300 Amp.	One (1)
<u>Equipment</u>	<u>Capacity</u>	<u>Number of Units</u>														
Plate Compactor	5 HP or 2 tons	One (1)														
Concrete Mixer	1-Bagger	One (1)														
Concrete Vibrator, Pen Type	2 HP	One (1)														
Welding Machine	300 Amp.	One (1)														
<p>12</p>	<p>N/A</p>															
<p>15.1</p>	<p>The bid security shall be in the form of a Bid Securing Declaration or any of the following forms and amounts:</p> <ol style="list-style-type: none"> a. The amount of not less than PHP59,743.07(2% of ABC), if bid security is in cash, cashier's/manager's check, bank draft/guarantee or irrevocable letter of credit; b. The amount of not less than PHP149,357.67(5% of ABC), if bid security is in Surety Bond. 															
<p>19.2</p>	<p>Partial bids are allowed, as follows:</p>															
<p>20</p>	<p>Additional documents to be submitted during Post-Qualification:</p> <ol style="list-style-type: none"> 1. Other appropriate licenses and permits required by law and stated in the Bidding documents. <ol style="list-style-type: none"> a. <i>Original Bank Statement year ending prior to bid opening;</i> b. <i>Valid and updated PhilGEPS Registration (Platinum Membership)(all pages);</i> c. <i>Registration Certificate from Securities and Exchange Commission (SEC), Department of Trade and Industry (DTI) for sole proprietorship, or Cooperative Development Authority (CDA) for cooperatives or its equivalent document;</i> 															

	<p><i>d. Mayor's or Business permit issued by the city or municipality where the principal place of business of the prospective bidder is located, or the equivalent document for Exclusive Economic Zones or Areas;</i></p> <p><i>e. Valid Tax clearance per E.O. No. 398, s. 2005, as finally reviewed and approved by the Bureau of Internal Revenue (BIR), Quarterly Income Tax Returns filed and paid through the BIR Electronic Filing and Payment System (eFPS);</i></p> <p><i>f. The prospective bidder's audited financial statements, showing, among others, the prospective bidder's total and current assets and liabilities, stamped "received" by the BIR or its duly accredited and authorized institutions, for the preceding calendar year which should not be earlier than two (2) years from the date of bid submission;</i></p> <p><i>g. Philippine Contractors Accreditation Board (PCAB) License;</i></p> <p><i>h. Board of Accountancy (BOA) Certificate;</i></p> <p>2. <i>Contract and/or Notice of Award as supporting documents for NPC MinGen Form No. NPCMGNSF-INFR-01, if applicable;</i></p> <p>3. <i>(a) Valid Professional Regulation Commission (PRC) license for professional personnel; (b) Certificate of Training with accreditation from DOLE for the Construction Safety & Health Officer; (c) TESDA Training Certificate (NC II) of Welders or Electrician; and (d) Diploma and/or Service Record/Certificate of Employment of previous and/or current employer for Construction Foreman, Welders, Electrician & Plumber - as supporting documents for NPC MinGen Form No. NPCMGNSF-INFR-05, if applicable.</i></p> <p>4. <i>Certificate of Site Inspection issued by Plant/Department Manager or his authorized representative.</i></p>
<p>21</p>	<p>Additional contract documents relevant to the Project that may be required by existing laws and/or the Procuring Entity, <u>prior to contract signing</u>, such as:</p> <ul style="list-style-type: none"> a) Approved construction schedule and S-curve b) Approved manpower schedule c) Construction methods d) Approved equipment utilization schedule e) Construction safety and health program approved by the DOLE f) Approved Project Evaluation Review Technique/Critical Path Method (PERT/CPM)

BID DOCUMENTS

NAME OF PROJECT: Construction of Wharf with Integrated 702 Masl
Elevation Marker at Brgy. Lumbacawato, Balindong,
Lanao del Sur

SECTION IV- GENERAL CONDITIONS OF
CONTRACT

PR NO./REF. NO.: MG-COM22-020/INFR2022-CDD-039

Section IV. General Conditions of Contract

1. Scope of Contract

This Contract shall include all such items, although not specifically mentioned, that can be reasonably inferred as being required for its completion as if such items were expressly mentioned herein. All the provisions of RA No. 9184 and its 2016 revised IRR, including the Generic Procurement Manual, and associated issuances, constitute the primary source for the terms and conditions of the Contract, and thus, applicable in contract implementation. Herein clauses shall serve as the secondary source for the terms and conditions of the Contract.

This is without prejudice to Sections 74.1 and 74.2 of the 2016 revised IRR of RA No. 9184 allowing the GPPB to amend the IRR, which shall be applied to all procurement activities, the advertisement, posting, or invitation of which were issued after the effectivity of the said amendment.

2. Sectional Completion of Works

If sectional completion is specified in the Special Conditions of Contract (SCC), references in the Conditions of Contract to the Works, the Completion Date, and the Intended Completion Date shall apply to any Section of the Works (other than references to the Completion Date and Intended Completion Date for the whole of the Works).

3. Possession of Site

- 4.1. The Procuring Entity shall give possession of all or parts of the Site to the Contractor based on the schedule of delivery indicated in the SCC, which corresponds to the execution of the Works. If the Contractor suffers delay or incurs cost from failure on the part of the Procuring Entity to give possession in accordance with the terms of this clause, the Procuring Entity's Representative shall give the Contractor a Contract Time Extension and certify such sum as fair to cover the cost incurred, which sum shall be paid by Procuring Entity.
- 4.2. If possession of a portion is not given by the above date, the Procuring Entity will be deemed to have delayed the start of the relevant activities. The resulting adjustments in contract time to address such delay may be addressed through contract extension provided under Annex "E" of the 2016 revised IRR of RA No. 9184.

4. The Contractor's Obligations

The Contractor shall employ the key personnel named in the Schedule of Key Personnel indicating their designation, in accordance with ITB Clause 10.3 and specified in the BDS, to carry out the supervision of the Works.

The Procuring Entity will approve any proposed replacement of key personnel only if their relevant qualifications and abilities are equal to or better than those of the personnel listed in the Schedule.

5. Performance Security

- 5.1. Within ten (10) calendar days from receipt of the Notice of Award from the Procuring Entity but in no case later than the signing of the contract by both parties, the successful Bidder shall furnish the performance security in any of the forms prescribed in Section 39 of the 2016 revised IRR.
- 5.2. The Contractor, by entering into the Contract with the Procuring Entity, acknowledges the right of the Procuring Entity to institute action pursuant to RA No. 3688 against any subcontractor be they an individual, firm, partnership, corporation, or association supplying the Contractor with labor, materials and/or equipment for the performance of this Contract.

6. Site Investigation Reports

The Contractor, in preparing the Bid, shall rely on any Site Investigation Reports referred to in the SCC supplemented by any information obtained by the Contractor.

7. Warranty

- 7.1. In case the Contractor fails to undertake the repair works under Section 62.2.2 of the 2016 revised IRR, the Procuring Entity shall forfeit its performance security, subject its property(ies) to attachment or garnishment proceedings, and perpetually disqualify it from participating in any public bidding. All payables of the GOP in his favor shall be offset to recover the costs.
- 7.2. The warranty against Structural Defects/Failures, except that occasioned-on force majeure, shall cover the period from the date of issuance of the Certificate of Final Acceptance by the Procuring Entity. Specific duration of the warranty is found in the SCC.

8. Liability of the Contractor

Subject to additional provisions, if any, set forth in the SCC, the Contractor's liability under this Contract shall be as provided by the laws of the Republic of the Philippines.

If the Contractor is a joint venture, all partners to the joint venture shall be jointly and severally liable to the Procuring Entity.

9. Termination for Other Causes

Contract termination shall be initiated in case it is determined *prima facie* by the Procuring Entity that the Contractor has engaged, before, or during the implementation of the contract, in unlawful deeds and behaviors relative to contract acquisition and implementation, such as, but not limited to corrupt, fraudulent, collusive, coercive, and obstructive practices as stated in ITB Clause 4.

10. Dayworks

Subject to the guidelines on Variation Order in Annex "E" of the 2016 revised IRR of RA No. 9184, and if applicable as indicated in the SCC, the Dayworks rates in the Contractor's Bid shall be used for small additional amounts of work only when the Procuring Entity's Representative has given written instructions in advance for additional work to be paid for in that way.

11. Program of Work

- 11.1. The Contractor shall submit to the Procuring Entity's Representative for approval the said Program of Work showing the general methods, arrangements, order, and timing for all the activities in the Works. The submissions of the Program of Work are indicated in the SCC.
- 11.2. The Contractor shall submit to the Procuring Entity's Representative for approval an updated Program of Work at intervals no longer than the period stated in the SCC. If the Contractor does not submit an updated Program of Work within this period, the Procuring Entity's Representative may withhold the amount stated in the SCC from the next payment certificate and continue to withhold this amount until the next payment after the date on which the overdue Program of Work has been submitted.

12. Instructions, Inspections and Audits

The Contractor shall permit the GOP or the Procuring Entity to inspect the Contractor's accounts and records relating to the performance of the Contractor and to have them audited by auditors of the GOP or the Procuring Entity, as may be required.

13. Advance Payment

The Procuring Entity shall, upon a written request of the Contractor which shall be submitted as a Contract document, make an advance payment to the Contractor in an amount not exceeding fifteen percent (15%) of the total contract price, to be made in lump sum, or at the most two installments according to a schedule specified in the

SCC, subject to the requirements in Annex "E" of the 2016 revised IRR of RA No. 9184.

14. Progress Payments

The Contractor may submit a request for payment for Work accomplished. Such requests for payment shall be verified and certified by the Procuring Entity's Representative/Project Engineer. Except as otherwise stipulated in the SCC, materials and equipment delivered on the site but not completely put in place shall not be included for payment.

15. Operating and Maintenance Manuals

- 15.1. If required, the Contractor will provide "as built" Drawings and/or operating and maintenance manuals as specified in the SCC.
- 15.2. If the Contractor does not provide the Drawings and/or manuals by the dates stated above, or they do not receive the Procuring Entity's Representative's approval, the Procuring Entity's Representative may withhold the amount stated in the SCC from payments due to the Contractor.

BID DOCUMENTS

NAME OF PROJECT: Construction of Wharf with Integrated 702 Masl
Elevation Marker at Brgy. Lumbacawato, Balindong,
Lanao del Sur

SECTION V- SPECIAL CONDITIONS OF
CONTRACT

PR NO./REF. NO.: MG-COM22-020/INFR2022-CDD-039

Section V. Special Conditions of Contract

Special Conditions of Contract

GCC Clause	
2	Sectional completion is not specified.
4.1	The Procuring Entity shall give possession of the Site to the Contractor <i>on the start date.</i>
6	The site investigation reports are: NONE
7.2	Fifteen (15) years
10	Dayworks are not applicable to the contract.
11.1	The Contractor shall submit the Program of Work to the Procuring Entity's Representative <u>upon contract signing</u> or within <u>three (3) days</u> of delivery of the Notice of Award.
11.2	The amount to be withheld for late submission of an updated Program of Work is Fifty (50) % of the billed amount. The updating of Program of Work shall be done bi-monthly.
13	The amount of the advance payment is 15% of contract amount and paid in lump sum.
14	No further instruction.
15.1	The date by which operating and maintenance manuals are required is upon completion of the project. The date by which "as built" drawings are required is upon completion of the project.
15.2	The amount to be withheld for failing to produce "as built" drawings and/or operating and maintenance manuals by the date required is one hundred percent (100%) of the final billing.

Section VI. Specifications

Handwritten signature and initials in blue ink, including a large stylized signature and smaller initials below it.

PROJECT HIGHLIGHTS

PH 1.0 GENERAL

The project is funded by NPC Mindanao Generation as part of its corporate social responsibility and is aimed to enhance corporate image, such as mitigation and strengthen the effective partnership of NPC and host communities in the pursuit of NPC mission and vision.

This project aims to provide an Integrated Elevation 702 masl. Marker in order to monitor the water elevation at Lake Lanao in compliance with the Environmental Certificate Compliance as required by the DENR. This will also improve transportation system of goods and passengers to and from nearby Municipalities including Marawi City.

The Contractor shall furnish all labor, materials, equipment/tools and other incidental matters necessary to complete the works in accordance with the contracts and approved detailed engineering activities; and other existing laws, rules and regulations relative thereto.

PH 2.0 PROJECT LOCATION

The project is located at Brgy. Lumbacawato, Balindong, Lanao del Sur.

PH 3.0 SCOPE OF WORK

The works and services to be performed by the Contractor for this undertaking shall essentially consist of, but not limited to the Construction of Wharf with Integrated Elevation 702 Masl. Marker at Brgy. Lumbacawato, Balindong, Lanao del Sur with the following scope of works:

- a. Mobilization;
- b. Clearing and Site Preparation;
- c. Earthworks: Earthfilling/Backfilling (Boulder)
- d. Concrete Works;
- e. Reinforcement Steel Bar/DSB Works;
- f. Roofing, Trusses, Railing and Lighting Works;
- g. Painting Works;
- h. Project Landmark Elevation 702 Masl. Gauge Marker and Signage with Stainless Lettering Works.
- i. Demobilization and Clean-up works

PH 4.0 CONTRACT PERIOD

The contractor shall complete the works as specified in Clause 3 within **Ninety (90) calendar days**. The total contract duration is inclusive of six (6) unworkable days considered unfavorable for the execution of work at site. The contract period shall be reckoned from the date of contract effective as specified in the Notice to Proceed.

PH 5.0 CONTRACTOR'S CLASSIFICATION

The Contractor must have a valid Philippine Contractors Accreditation Board (PCAB) license of at least **Category C & D- General Engineering** with inter-agency registration and classification of at least **Small B-Port, Harbor or Offshore Engineering**.

The Contractor must have undertaken similar contracts that involves construction/rehabilitation/expansion of commercial, industrial or office building provided that the contract cost shall be at least equivalent to 50% of ABC.

f
D
e

TECHNICAL SPECIFICATIONS

CW 1.0 GENERAL CONSTRUCTION FACILITIES

CW 1.1 GENERAL SCOPE

This item shall consist of the construction of Wharf with Integrated elevation 702 Masl. Marker, and other appurtenant structures, moving-in of the Contractor's construction equipment, and setting up the Contractor's camp facilities.

CW 1.2 MATERIALS

None

CW 1.3 WORKMANSHIP

The Contractor shall bring to the site all his necessary construction equipment and plant and install all stationary construction equipment and plant at location and in the manner approved by NPC. The Contractor shall submit sufficient detailed plans showing the proposed location of such stationary equipment and plant and other pertinent data.

The Contractor shall provide and grade his camp site, construct his camp, employee housing, warehouse and provide such related facilities and sanitary conveniences that the Contractor deems necessary for maintaining health, peace and order in the camp and work areas. The areas that may be used by the Contractor within the construction site shall be designated by NPC.

CW 1.4 MEASUREMENT AND PAYMENT

Work prescribed herein shall not be measured and paid separately; same shall be deemed to be included in pay items for other items for work.

CW 2.0 CLEARING AND SITE PREPARATION WORK

CW 2.1 CLEARING AND GRUBBING

The Contractor shall perform clearing and grubbing on the project site. The site shall be cleared and grabbed of all trees and brush except particular trees, which may be retained by the NPC for preservation. Particular trees to be left in place shall be protected from scarring and/or other injuries during clearing and grubbing work and other construction operations.

All stumps, roots and brush shall be removed to a depth of Thirty (30) cm below original ground surface and disposed of in a place designated by the NPC. Downed timber, which may be ordered saved by the NPC for future use, shall be cut into logs as directed and neatly piled in a place designated by the NPC, otherwise they shall be disposed of same as above.

CW 2.2 MISCELLANEOUS WORK

Where shown on the drawings or if not shown but directed by the NPC, the Contractor shall perform miscellaneous work like demolition, removal, chipping, replacement or transfer of existing structures and other miscellaneous work. All demolished structures shall be disposed of as directed by NPC.

(Handwritten signatures and initials)

CW 3.0 EARTHWORKS**CW 3.1 EXCAVATION****CW 3.1.1 GENERAL SCOPE**

This item shall consist of excavation and the disposal of material in accordance with the Specification and in conformity with the lines, grades and dimensions shown on the Plans or established by the NPC Engineer.

CW 3.1.2 MATERIALS

None

CW 3.1.3 WORKMANSHIP

All excavations shall be finished to reasonably smooth and uniform surfaces. No materials shall be wasted without authority of the NPC Engineer. Excavation operations shall be conducted so that material outside of the limits of slopes will not be disturbed.

All suitable materials removed from the excavation shall be used in the formation of the embankment, sub-grade, shoulders, slopes, bedding, and backfill for structures, and for other purposes shown on the Plans or as directed.

Only approved materials shall be used in the construction of embankments and backfills.

All excess materials, including rock and boulders that cannot be used in embankments shall be disposed off as directed.

CW 3.1.4 MEASUREMENT AND PAYMENT

Unit of measure shall be the net volume in its original position.

The accepted quantities shall be paid for at the contract unit price included in the Bill of Quantities which price and payment shall be full compensation for the removal and disposal of excavated materials including all labor, equipment, tools, and incidentals necessary to complete the work prescribed in this Item.

CW 4.2 BACKFILLING (BOULDERS)**CW 4.2.1 GENERAL SCOPE**

This item shall consist of the furnishing, placing and compacting of Boulders with or without grout as the case may be, with or without filter backing, on top of existing soft seabed material encountered and found unsuitable for foundation of the wharf which shall be constructed in accordance with the specifications and to the lines and grades and dimensions shown on plans.

CW 4.2.2 MATERIALS

Boulders shall consist of rock as nearly as sub-angular natural stones. It shall be a class A, sound, durable, dense, resistant to the action of air and water and suitable in all respects for the purpose intended. The size of Boulders are indicated in the bill of particulars and plans. All rocks (Class I & II) to be used shall be hard durable, and not likely to disintegrate in sea/lake water. Rocks shall weigh not less than 1,900 kilograms per cubic meter (specific gravity – 1.9) or approximately 19.05 kilo Newton (kN) per cubic meter of solid materials. Rocks shall be angular. Sub-angular rocks may be used subject to the approval of the NPC

Handwritten signature and initials in the bottom right corner of the page.

Engineer. Rounded or well rounded rocks will not be accepted. It shall be taken from approved source or quarry.

Concrete filler for the purpose of preventing escape of fill material, shall be class "B" concrete plus 10% additional cement.

CW 4.2.3 WORKMANSHIP

The larger pieces of facing rock (Class I & II) shall be laid carefully along the toe with allowance being made for possible settlement. These rows of large rocks shall be extended to maintain slightly in advance of the completed portion of work. The larger pieces of rock shall be place on the outer slope of the concrete and they shall be laid so their longest dimension will be approximately normal to the plane of the face of the slope as indicated in the plans.

The work shall be done in skillful manner, which implies careful selection of rocks to fit properly together so that the finished surface shall be even and tight.

CW 4.2.4 MEASUREMENT AND PAYMENT

Backfilling will be measured by cubic meter (cu.m.). The quantity to be paid for shall be the design volume compacted in-place as shown on the Plans and accepted in the completed course.

The accepted quantities shall be paid for at the contract unit price for Backfilling which price and payment shall be full compensation for furnishings and placing all materials, including all labor, equipment, tools and incidentals necessary to complete the work prescribed in this Item.

CW 5.0 CONCRETE WORKS

CW 5.1 GENERAL SCOPE

This item shall consist of furnishing, placing and finishing concrete in accordance with the specification and conforming to the lines, grades, and dimension shown on the plans.

CW 5.2 MATERIALS

None

CW 5.2.1 Portland Cement and Masonry Cement

Cement shall conform to the requirements of the following cited Specifications for the type specified or permitted.

Type	Specifications
Portland Cement	AASHTO M 85 (ASTM C 150)
Blended Hydraulic Cements	AASHTO M 240 (ASTM C 595)
Masonry Cement	AASHTO M 150 (ASTM C 91)

Only Type 1 Portland Cement shall be used unless otherwise provided for in the Special Provisions. Different brands or the same brands from different mills shall not be mixed nor shall they be used alternately unless the mix is approved by the Engineer.

f
p

① ↗

The Contractor shall provide suitable means of storing and protecting the cement against dampness. Cement which, for any reason, has become partially set or which contains lumps of caked cement will be rejected. Cement salvaged from discarded or used bags shall not be used.

The compressive strength of mortar samples tested at 7 days can be considered for acceptance of cement quality provided that the strength of the samples at 7 days is not less than 23.46 MPa which is 85% of the compressive strength requirement for 28 days (27.6 MPa) when tested in accordance with ASTM C 150.

CW 5.2.1 CONCRETE AGGREGATES

CW 5.2.1.1 Fine Aggregate

It shall consist of natural sand, stone screenings or other inert materials with similar characteristics, or combinations thereof, having hard, strong and durable particles. Fine aggregate from different sources of supply shall not be mixed or stored in the same pile nor used alternately in the same class of concrete without the approval of the Engineer.

It shall not contain more than three (3) mass percent of material passing the 0.075 mm (No. 200 sieve) by washing nor more than one (1) mass percent each of clay lumps or shale. If the fine aggregate is subjected to five (5) cycles of the sodium sulfate soundness test, the weighted loss shall not exceed 10 mass percent. It shall be free from injurious amounts of organic impurities.

The fine aggregate shall be well-graded from coarse to fine and shall conform to the Grading Requirements listed below:

Grading Requirement for Fine Aggregate

Sieve Designation	Mass Percent Passing
9.5 mm (3/8 in)	100
4.75 mm (No. 4)	95 – 100
2.36 mm (No. 8)	-
1.18 mm (No. 16)	45 – 80
0.600 mm (No. 30)	-
0.300 mm (No. 50)	5 – 30
0.150 mm (No. 100)	0 – 10

CW 5.2.1.2 Coarse Aggregate

It shall consist of crushed stone, gravel, blast furnace slag, or other approved inert materials of similar characteristics, or combinations thereof, having hard, strong, durable pieces and free from any adherent coatings.

It shall contain not more than one (1) mass percent of material passing the 0.075 mm (No. 200) sieve, not more than 0.25 mass percent of clay lumps, nor more than 3.5 mass percent of soft fragments.

If the coarse aggregate is subjected to five (5) cycles of the sodium sulfate soundness test, the weighted loss shall not exceed 12 mass percent. It shall have a mass percent of wear not exceeding 40 when tested by AASHTO T 96.

Only one grading specification shall be used from any one source.

(Handwritten marks: a large 'Q' or '9' at the top right, a '0' below it, and a large vertical oval with a vertical line through it at the bottom right, with an 'M' to its left.)

Grading Requirement for Coarse Aggregate

Sieve Designation		Mass Percent Passing		
Standard mm	Alternate U. S. Standard	Grading A	Grading B	Grading C
75.00	3 in.	100	-	-
63.00	2-1/2 in.	90-100	100	100
50.00	2 in.	-	90-100	95-100
37.5	1-1/2 in.	25-60	35-70	-
25.0	1 in.	-	0-15	35-70
19.0	¾ in.	0-10	-	-
12.5	½ in.	0-5	0-5	10-30
4.75	No. 4	-	-	0-5

CW 5.2.1.2 Water

Water used in mixing, curing or other designated application shall be reasonably clean and free of oil, salt, acid, alkali, grass or other substances injurious to the finished product. Water will be tested in accordance with and shall meet the requirements of Item 714, Water. Water which is drinkable may be used without test. Where the source of water is shallow, the intake shall be so enclosed as to exclude silt, mud, grass or other foreign materials.

CW 5.3 WORKMANSHIP

The proportions of aggregate to cement for any concrete shall be such as to produce a mixture which will work readily into the corners and angles of the form and around reinforcement with the method of placing employed on the work, but without permitting the materials to segregate or excess free water to collect on the surface. The methods of measuring concrete materials shall be such that the proportions can be accurately controlled and easily checked at any time during the work.

The proportion of fine aggregate, coarse aggregate and cement to attain the required strength shall be 1:2:4, 1 part Cement in bag; 2 part Sand in bags; and 4 part Gravel in bags.

Water-cement ratios for strengths greater than that shown in Table below may be used provided that the relationship between strength and water-cement ratio for the materials to be used has been previously established by reliable test data and the resulting concrete satisfies the requirements of concrete quality.

MAXIMUM PERMISSIBLE WATER-CEMENT RATIOS FOR CONCRETE

Specified compressive strength at 28 days, psi fc	Maximum permissible water-cement ratio			
	Non air-entrained concrete		Air-entrained concrete	
	U.S. gal. per 42.6 kg. bag of cement	Absolute ratio by weight	U.S. gal per 42.6 kg. bag of cement	Absolute ratio by weight
2500	7 ¼	0.642	6 ¼	0.554
3000	6 ½	0.576	5 ¼	0.465
3500	5 ¾	0.510	4 ½	0.399
4000	5	0.443	4	0.354

JK

(Handwritten mark)

^

CW 5.4 MEASUREMENT AND PAYMENT

The quantity of concrete to be paid shall be the quantity shown in the Bid Schedule in cubic meter, unless changes in design are made in which case the quantity shown in the Bid Schedule will be adjusted by the amount of the change for the purpose of payment. No deduction will be made for the volume occupied by the pipe less than 101 mm (4") in diameter nor for reinforcing steel, anchors, or expansion materials.

The accepted quantities of structural concrete completed in place will be paid for at the contract unit price for cubic meter as indicated on the Bid Schedule. Such prices and payment shall be full compensation for furnishing all materials, and for all labor, materials, equipment, tools and incidentals necessary to complete the item.

CW 6.0 REINFORCEMENT STEEL BAR WORKS

CW 6.1 GENERAL SCOPE

This item shall consist of furnishing, bending, fabricating and placing of steel reinforcement of the type, size, shape and grade required in accordance with this Specification and in conformity with the requirements shown on the Plans or as directed by the NPC Engineer.

CW 6.2 MATERIALS

Reinforcing steel shall conform when tested to the requirements of the following Specifications:

Deformed Billet-Steel Bars for Concrete Reinforcement	AASHTO M 31 (ASTM A 615/PNS 49)
Deformed Steel Wire for Concrete Reinforcement	AASHTO M 225 (ASTM A 496)
Welded Steel Wire Fabric for Concrete Reinforcement	AASHTO M 55 (ASTM A 185)
Cold-Drawn Steel Wire for Concrete Reinforcement	AASHTO M 32 (ASTM A 82)
Fabricated Steel Bar or Rod Mats for Concrete Reinforcement	AASHTO M 54 (ASTM A 184)
Welded Deformed Steel Wire Fabric of Concrete Reinforcement	AASHTO M 221 (ASTM A 497)
Plastic Coated Dowel Bars	AASHTO M 254 Type A
Low Alloy Steel Deformed Bars for Concrete Reinforcement	ASTM A 206

Bar reinforcement for concrete structures, except No. 2 bars shall be deformed in accordance with AASHTO M 42, M 31 and M 53 for Nos. 3 to 11.

Dowel and tie bars shall conform to the requirements of AASHTO M 31 (ASTM A 615/PNS 49) or AASHTO M 42 except that rail steel shall not be used for tie bars that are to be bent and restraightened during construction. Tie bars shall be deformed bars, Dowel bars shall be plain round bars. They shall be free from burring or other deformation restricting slippage in the concrete. Before delivery to the site of the work, a minimum of one half (1/2) the length of each dowel bar shall be painted with one coat of approved lead or tar paint.

Handwritten marks: a large '4' and a smaller 'b'.

Handwritten marks: a circled '4' and a small '4'.

The sleeves for dowel bars shall be metal of an approved design to cover 50 mm, plus or minus 6.3 mm of the dowel, with a closed end, and with a suitable stop to hold the end of the sleeve at least 25 mm from the end of the dowel bar. Sleeves shall be of such design that they do not collapse during construction.

Plastic coated dowel bar conforming to AASHTO M 254 may be used.

CW 6.3 WORKMANSHIP

All steel reinforcement shall be accurately placed in the position shown on the Plans or as required by the NPC Engineer and firmly held there during the placing and setting of the concrete. Bars shall be tied at all intersections except where 238 spacing is less than 300 mm in each directions, in which case, alternate intersections shall be tied. Ties shall be fastened on the inside.

Steel reinforcement shall be stored above the surface of the ground upon platforms, skids, or other supports and shall be protected as far as practicable from mechanical injury and surface deterioration caused by exposure to conditions producing rust. When placed in the work, reinforcement shall be free from dirt, detrimental rust, loose scale, paint, grease, oil, or other foreign materials. Reinforcement shall be free from injurious defects such as cracks and laminations.

All reinforcement shall be furnished in the full lengths indicated on the Plans. Splicing of bars, except where shown on the Plans, will not be permitted without the written approval of the Engineer. Splices shall be staggered as far as possible and with a minimum separation of not less than 40 bar diameters. Not more than one-third of the bars may be spliced in the same cross-section, except where shown on the Plans.

CW 6.4 MEASUREMENT AND PAYMENT

The quantity of concrete to be paid shall be the quantity shown in the Bid Schedule in kilogram.

The accepted quantity, measured as prescribed in the Bid Schedule, shall be paid for at the contract unit price for Reinforcing Steel which price and payment shall be full compensation for furnishing and placing all materials, including all labor, equipment, tools and incidentals necessary to complete the work prescribed in this Item.

CW 7.0 ROOFING, TRUSSES, RAILINGS AND LIGHTING WORKS

CW 7.1 GENERAL SCOPE

This item shall consist of furnishing, fabricating, installation/ placing of the , G.I. pipe post, roofing, trusses, railings, lightings as well as painting in accordance with the Specification and in conformity with the requirements shown on the Plans or as directed by the NPC Engineer.

CW 7.2 MATERIALS

G.I. Post, Trusses & Roofing Materials

All Galvanized steel pipes shall Schedule 40 and meet the requirements with the AISC " Manual of Steel Construction ". All fixtures and fittings must bear the trademarks of the

SECTION VI- SPECIFICATIONS

manufacturer. All installation without the trademarks shall be removed and replaced with properly marked fittings without extra cost to the NPC.

Materials for steel trusses shall be of the best quality of their kind, well graded and within the all allowable distortions, however, they shall be free from flakes, corrosion, scale of fragments that could reduce the resistance and durability or injure the external appearance.

Pre-painted Spanish Style Tile Roof, Ga. 26 shall be fabricated from cold rolled galvanized iron sheets specially tempered steel for extra strength and durability. It shall conform to the material requirements defined in PNS 67: 1985. Desired color shall be subject to the approval of the Architect/Engineer.

Gutters, Valleys, Flashings Hip and Ridge roll shall be fabricated from gauge 24 (.600 mm thick) cold-rolled plain galvanized iron sheets specially tempered steel. Profile section shall be as indicated on the Plans.

Fastening hardware shall be of galvanized iron straps and rivets. G.I. straps are of .500 mm thick x 16 mm wide x 267 mm long (gauge 26 x 5/8" x 10-1/2") and standard rivets.

Lightings:

Light Output	400 Watts
Solar Panel	Monocrystalline
Luminous Flux	36,000 lm
Light Source	High Brightness SMD LED
Dimension	L: 900 x W: 220 x Thick: 45 mm
Color Temperature	6000 – 6500 K / Daylight
Visual Angle	120° Degrees
Material	Aluminum Housing
Battery Type	Lithium Battery
Motion Sensor	With Built-in Motion Sensor (Optional Option: Customized steady lighting that slowly reduce brightness from 100% to 0% in 12 hours)
Work Time	≥ 10 Hrs Full Power / ≥ 24 Hrs Half Power
Working Temp.	Charging: 0°C ~+ 60°C, Discharging: -20°C ~+ 60°C, Storage: 0°C ~+ 45°C
Lifetime	> 50,000 hours
IP Rating	IP 65

CW 7.3 WORKMANSHIP

Steel Works & Installation of Roofing:

Materials shall conform to the respective specifications specified herein. Materials not otherwise specified herein shall conform to the AISC "manual of Steel Construction".

Structural Steel: ASTM A36

Steel Pipe: ASTM A53, Type E or S, Grade B, ASTM A501.

Steel W-Shape Piles

(Soldier Piles): ASTM A328

All welding works shall be as indicated on the drawings and shall conform to AWS D1.1 77 "Structural Welding Code". Unless specified on the drawings, fillet welds shall be a minimum of 5mm (3/16") and welding electrodes shall be with a tensile strength of 485 MPa.

All welding works shall be executed by the AWS D1.1 qualified welders, welding operators and trackers, whose workmanship shall be subject to the approval of NPC.

Roofing installation shall start by placing the first sheet in position with the downturned edge in line with other building elements and fastened to supports as recommended.

Place the downturned edge of the next sheet over the edge of the first sheet, to provide side lap and hold the side lap firmly in place. Continue the same procedure for subsequent sheets until the whole roofing area is covered and/or (Adopt installation procedure provided in the instruction manual for each type of Architectural molded rib profile section).

Pre-painted steel roofing, walling products and accessories should be delivered to the jobsite in strapped bundles. Sheets and/or bundles shall be neatly stacked in the ground and if left in the open it shall be protected by covering the stack materials with loose tarpaulin.

Where so indicated on the Plans, structural members shall be joined by welding. The welds shall be of the size and type indicated and shall be made by competent operators.

Lamp Post with Solar Power Lighting:

Lamp post and Solar Power Lighting and its accessories shall be inspected before deliver to the project site. Lamp post shall be installed securely and properly.

Integrated solar led street light cannot work without sunshine charging, please select the suitable product model according to the local sunshine radiation and the annual total radiation.

Integrated solar led street light adopts the long life Lithium battery for storing energy, charging temperature at day time is between: 0°C~+65°C, when temperature goes lower than 0°C, the control system will stop automatically to protect the battery, and it will revive to charge the battery while temperature goes higher than 0°C. Discharging temperature at night is between: -20°C~+65°C, any ambient beyond will bring damage to the battery. Please confirm your local extreme temperature is suitable for above while selecting the street light.

Battery of the "integrated solar led street light" can be stored for 6 months long after full charged, and please examine, charge it periodically after long time transportation to prevent damage.

While installed in Northern Hemisphere, please make sure the surface of the solar panel to be facing the South to collect maximum sunshine radiation, while installed in Southern Hemisphere, please make sure the surface of the solar panel to be facing the North to collect maximum sunshine radiation. At the same time please keep it away from any shadow of house, trees etc.

Keep cleaning the surface of the integrated solar led street light with normal detergent to get maximum power generation, clean the dust or tree leaves or any grease..

CW 7.4 MEASUREMENT AND PAYMENT

The unit of measure shall be in lot.

The accepted quantity, measured as prescribed in the Bid Schedule, shall be paid for at the contract unit price which price and payment shall be full compensation for furnishing and placing all materials, including all labor, equipment, tools and incidentals necessary to complete the work prescribed in this Item.

CW 8.0 PAINTING WORKS

CW 8.1 GENERAL SCOPE

This item shall consist of furnishing of materials, labor, tools and equipment required for painting works as shown on the approved plans and undertaking the proper painting in accordance with this specification.

CW 8.2 MATERIALS

All paint materials shall meet the requirements of the Philippine National Standard Specifications for Paintings.

Paints shall be brought to the Site in tightly closeable, convenient, original containers, if nothing to the contrary is stipulated in the Specifications. The containers shall be marked in a durable manner with the following particulars:

- Manufacturer
- Paint and relevant thinner
- Gross and net weights
- Date of supply by the manufacturer's factory

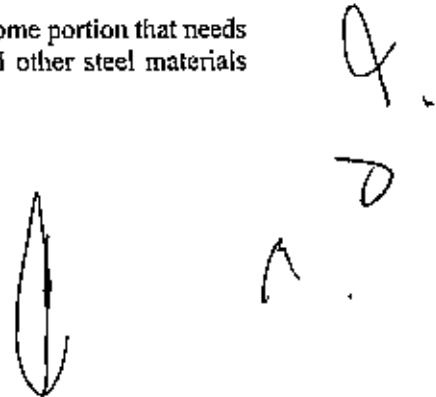
Only thinners supplied by makers of the paint or those described by them as suitable shall be used for adjusting paints to working consistency. The instructions of the maker shall be followed in this respect.

With the exception of ready-mixed materials in original containers, all mixing shall be done at the job site. No materials are to be reduced or changed except as specified by the Manufacturer of said materials.

CW 8.3 WORKMANSHIP

All work shall be done by skilled painters in a workmanlike manner. All paints shall be evenly applied Two (2) coats so as to be free from sags, runs, crawls or other defects. All painting materials shall be meet the requirements of stress and shall be in accordance with the relevant standards. All coatings shall be of proper consistency and well brushed out so as to show the minimum of brush marks, except varnish and enamel which shall be uniformly flowed on. All brushes shall be clean and in good condition, with heavy brushes preferred. Light brushes shall not be permitted.

Surfaces to be painted must be thoroughly inspected. There might be some portion that needs further re-surfing and finishing. For G.I. Pipe, Rectangular Tube and other steel materials



will be used in the trusses shall be primed with red/gray oxide followed by the quick drying enamel with at least two (2) coats.

Paint shall be thoroughly stirred so as to keep the pigment evenly in suspension when paint is being applied.

No painting shall be done under conditions that are unsuitable for the production of good results. No oil painting shall be done in damp weather.

Application of succeeding coats shall strictly follow the over-coating times specified by the paint manufacturer. If no specific data are available, all coats shall be thoroughly dry before painting shall be applied. At least twenty-four (24) hours shall be allowed between coats. Exterior painting under damp/wet conditions is not allowed.

Painting coat as specified are intended to cover the surfaces perfectly, if surfaces are not fully covered, further coat shall be applied to attain the desired evenness of the paint application.

All parts of mouldings and ornaments shall be left clean and true to details. All finish shall be uniform as to sheen, color and texture, except when glazing is required.

Metal/stainless shall be clean, dry and free from mill scale and rust. Remove all grease and oil from surfaces. Wash unprimed galvanized metal with etching solution and allow it to dry.

Paints when applied by brush shall become non-fluid, thick enough to lay down as adequate film of wet paint. Brush marks shall flow out after application of paint.

Paints made for application by roller must be similar to brushing paint. It must be nonstick when thinned to spraying viscosity so that it will break up easily into droplets.

CW 8.4 MEASUREMENT AND PAYMENT

The unit of measure shall be in lot.

The accepted quantity, measured as prescribed in the Bid Schedule, shall be paid for at the contract unit price which price and payment shall be full compensation for furnishing and placing all materials, including all labor, equipment, tools and incidentals necessary to complete the work prescribed in this item.

CW 9.0 PROJECT LANDMARK ELEV. 702 MASL. MARKER AND SIGNAGE

CW 9.1 GENERAL SCOPE

This item shall consist of furnishing, fabricating and placing of the stainless lettering and engraved NPC logo for the project landmark and 702 masl. elevation marker signage gauge in accordance with the Specification and in conformity with the requirements shown on the Plans or as directed by the NPC Engineer.

CW 9.2 MATERIALS

Elevation Gauge Marker shall be prefabricated 28mmx28mmx3mx1/8"thk. Stainless Square Tube engraved lettering for 702 Masl. Gauge Marker.

4-1/2" height x 1" x 1/8 thk. Stainless Lettering and 40cm dia. NPC Logo shall be welded in Ga. 21 G.I. Plain Sheet with the back frame/ support of 1-1/2"x1-1/2"x5mm thk. Angle Bar & Flat Bar, 1-1/2"x5mm thk. and for the color of paint, refer to the approved plans.

CW 9.3 WORKMANSHIP

Before the installation of Gauge marker and Signage, the NPC Engineer shall be inspected first the place where the gauge marker and signage fabricated. The gauge marker shall be bolted tightly and secured in the precast column.

The signage shall be placed and welded in the visible part of waiting shed. It shall be secured and installed properly. The clearance height will be identified by the NPC Engineer.

CW 9.4 MEASUREMENT AND PAYMENT

The unit of measure shall be in lot.

The accepted quantity, measured as prescribed in the Bid Schedule, shall be paid for at the contract unit price which price and payment shall be full compensation for furnishing and placing all materials, including all labor, equipment, tools and incidentals necessary to complete the work prescribed in this item.

CW 10.0 CLEARING AND DEMOBILIZATION

CW 10.1 General Scope

This item shall consist of the disposition of entire Contractor's camp facilities, clearing and cleaning at the work site.

CW 10.2 Materials

CW 10.3 Workmanship

Before moving out, the contractor shall restore the orderly state of worksite by clearing all temporary structures. Remove all excess/waste materials and store in designated areas.

Before the Contractor will demobilize its construction equipment/ tools, materials and crew, he shall secure approval from NPC and a joint inspection with the NPC inspector and Contractor will be conducted to make sure that all his accomplishment / work that needs remedial attention or correction shall be done prior to the issuance of the Certificate of Completion.

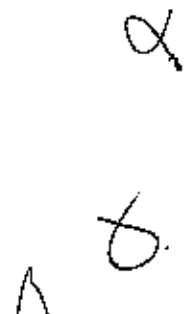
CW 10.4 MEASUREMENT AND PAYMENT

Work prescribed herein shall not be measured and paid separately; same shall be deemed to be included in pay items for other items for work.



Handwritten initials or signature: P, D, A

Section VII. Drawings



BID DOCUMENTS

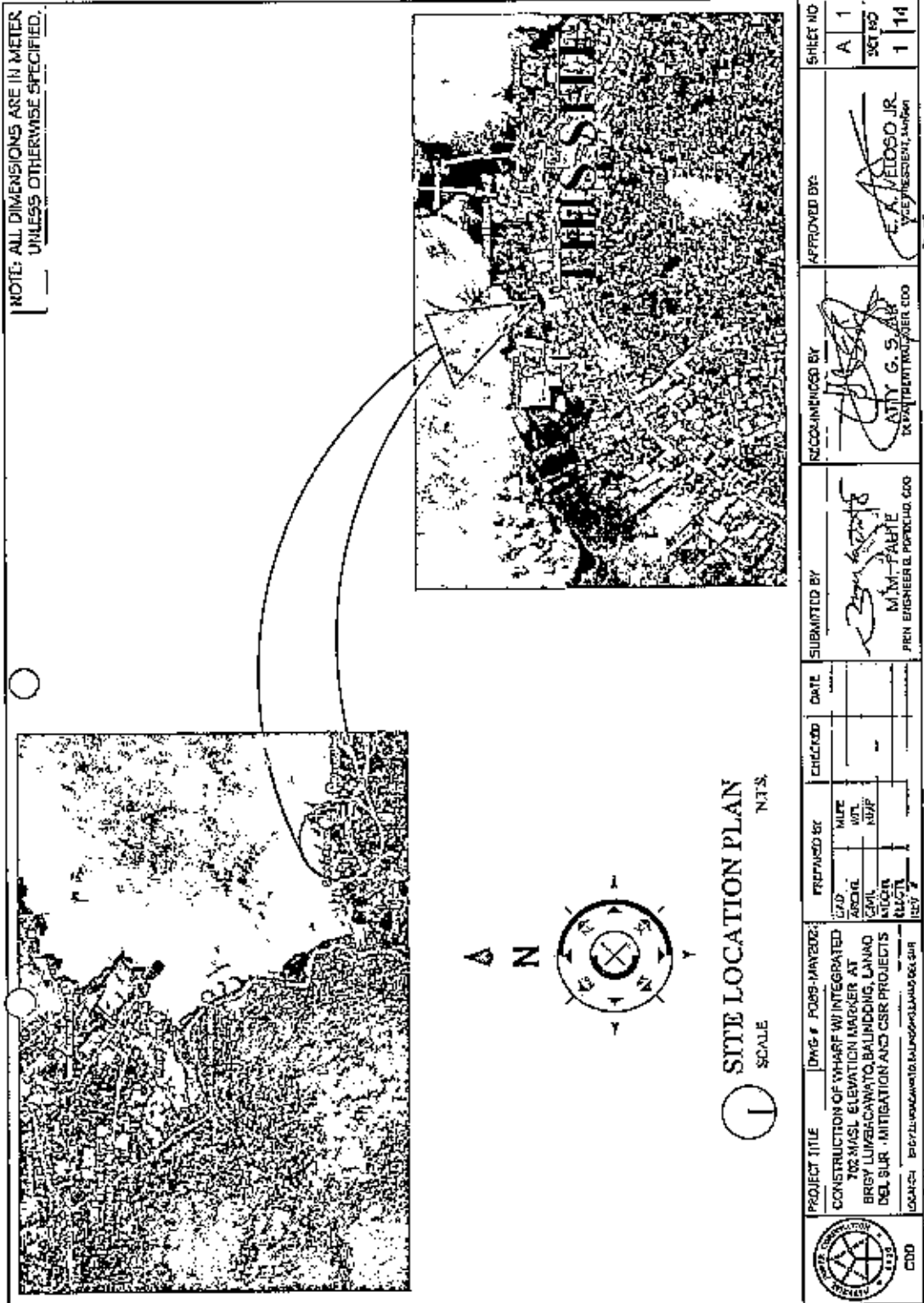
NAME OF PROJECT: Construction of Wharf with Integrated 702 Masl
Elevation Marker at Brgy. Lumbacawato, Balindong,
Lanao del Sur

SECTION VII- DRAWINGS

PR NO./REF. NO.: MG-COM22-020/INFR2022-CDD-039

Section VII. Drawings

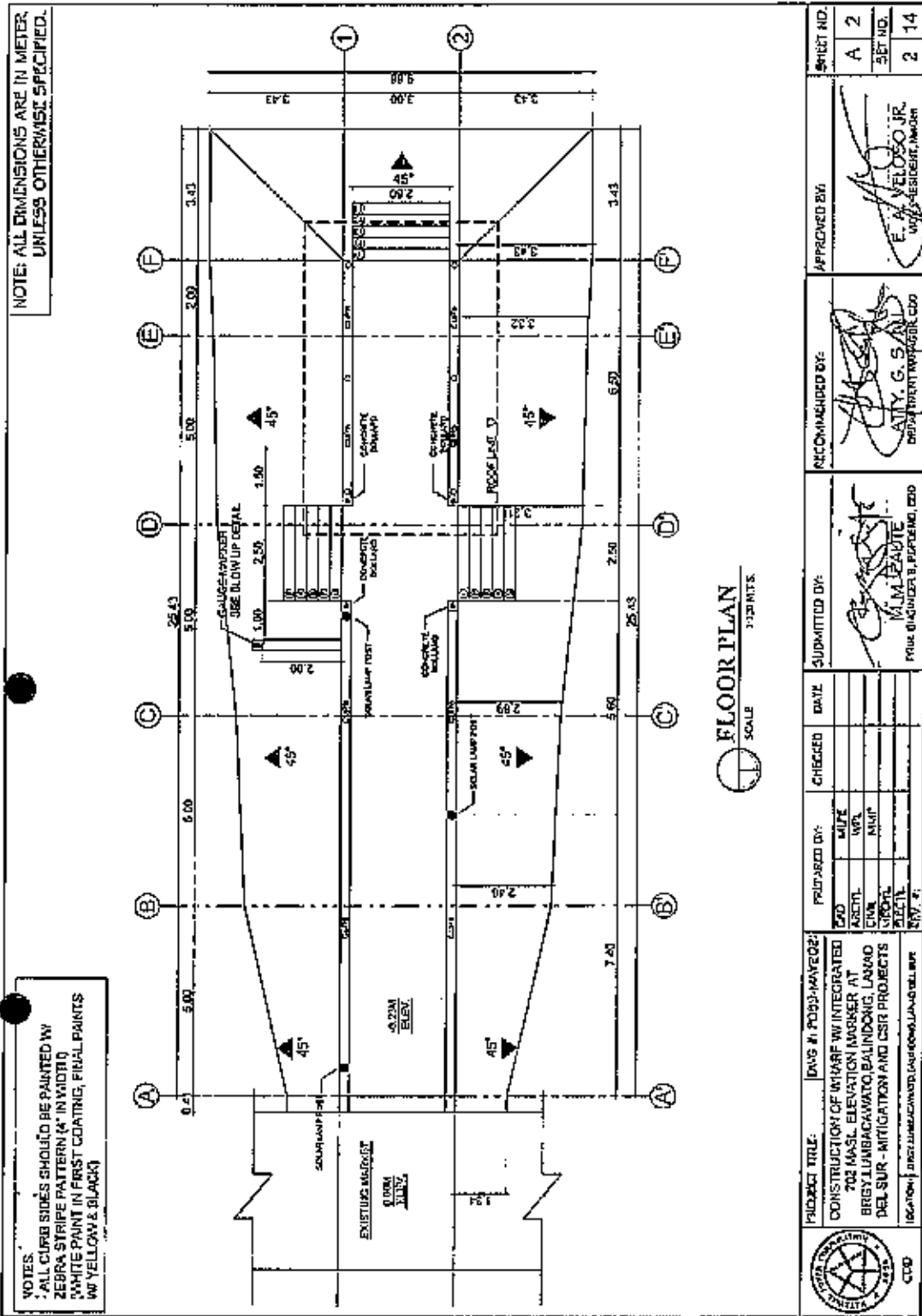
- Sheet No. 1/14* – *SITE LOCATION PLAN*
Sheet No. 2/14 – *FLOOR PLAN*
Sheet No. 3/14 – *FRONT ELEVATION AND LEFT & RIGHT ELEVATION*
Sheet No. 4/14 – *RIGHT ELEVATION*
Sheet No. 5/14 – *LEFT ELEVATION*
Sheet No. 6/14 – *SECTION THRU STA. A - STA. A' & SECTION THRU
STA. B - STA. B'*
Sheet No. 7/14 – *SECTION THRU STA. C - STA. C' & SECTION THRU
STA. D - STA. D'*
Sheet No. 8/14 – *SECTION THRU STA. E - STA. E' & SECTION THRU
STA. F - STA. F'*
Sheet No. 9/14 – *ROOF PLAN & ROOF FRAMING LAY OUT*
Sheet No. 10/14 – *TRUSSES 1&2, HALF TRUSSES 1 & 2 AND GIRT
DETAILS*
Sheet No. 11/14 – *WHARF TYP. SECTION DET. & WATER LEVEL
INDICATOR COLUMN & FOOTING DETAILS AND
FASCIA BOARD*
Sheet No. 12/14 – *WATER LEVEL GAUGE METER, LETTERING &
SIGNAGE DETAILS*
Sheet No. 13/14 – *WHARF REBARS LAY-OUT*
Sheet No. 14/14 – *STAIRS, CONC. BOLLARD, RAILINGS AND SOLAR
LAMP POST DETAILS*

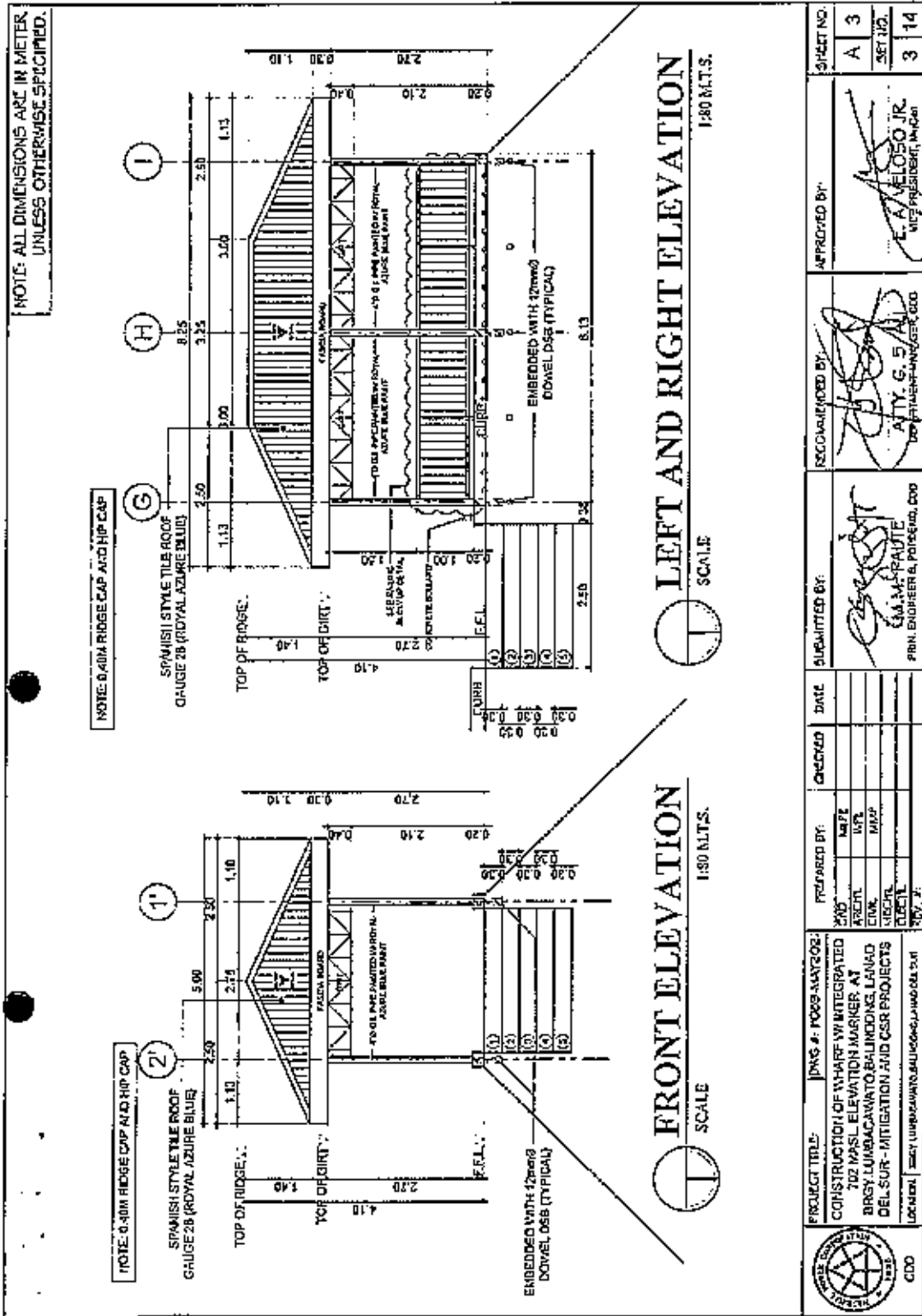


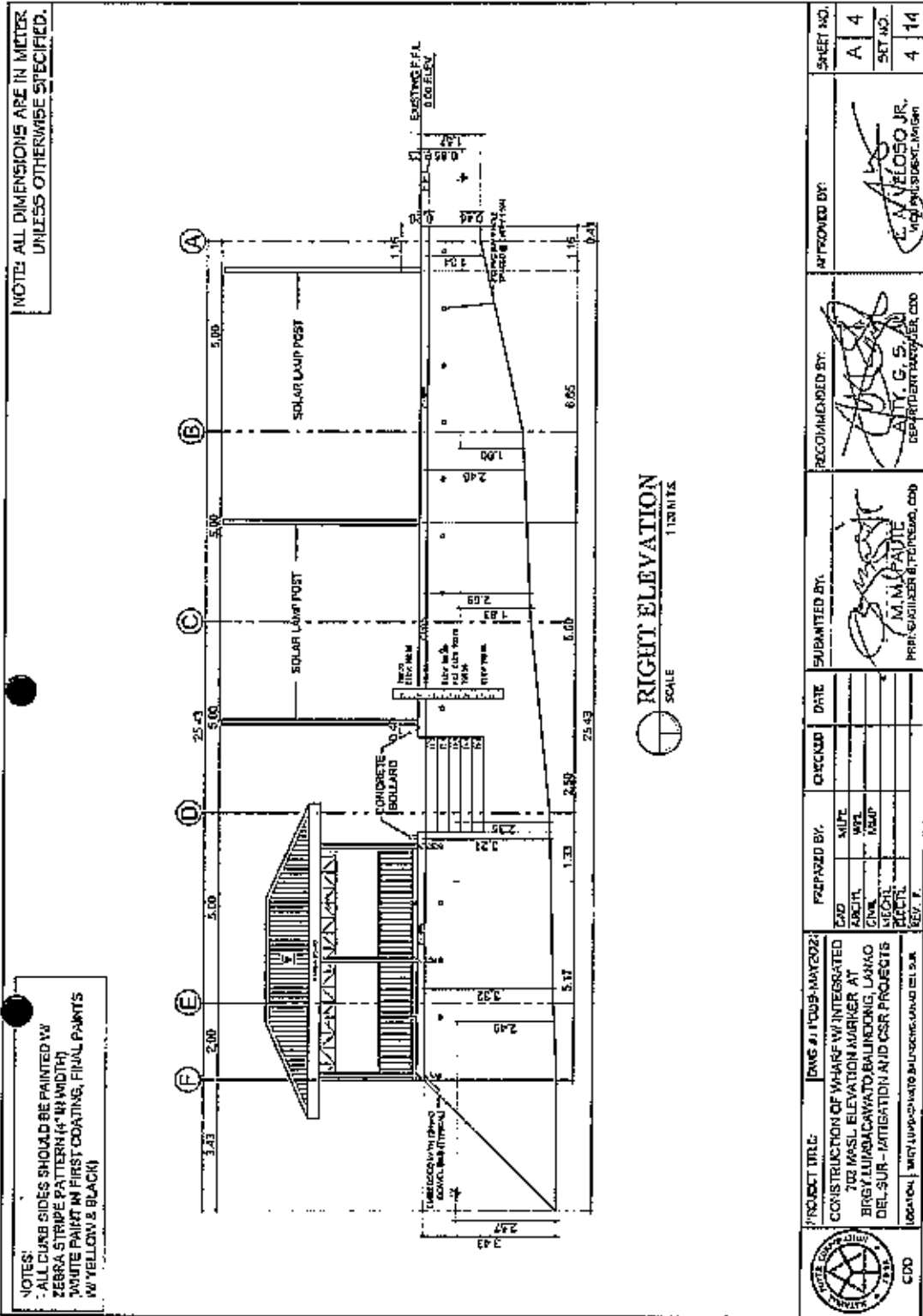
NOTE: ALL DIMENSIONS ARE IN METER, UNLESS OTHERWISE SPECIFIED.




1
SITE LOCATION PLAN
SCALE N.T.S.

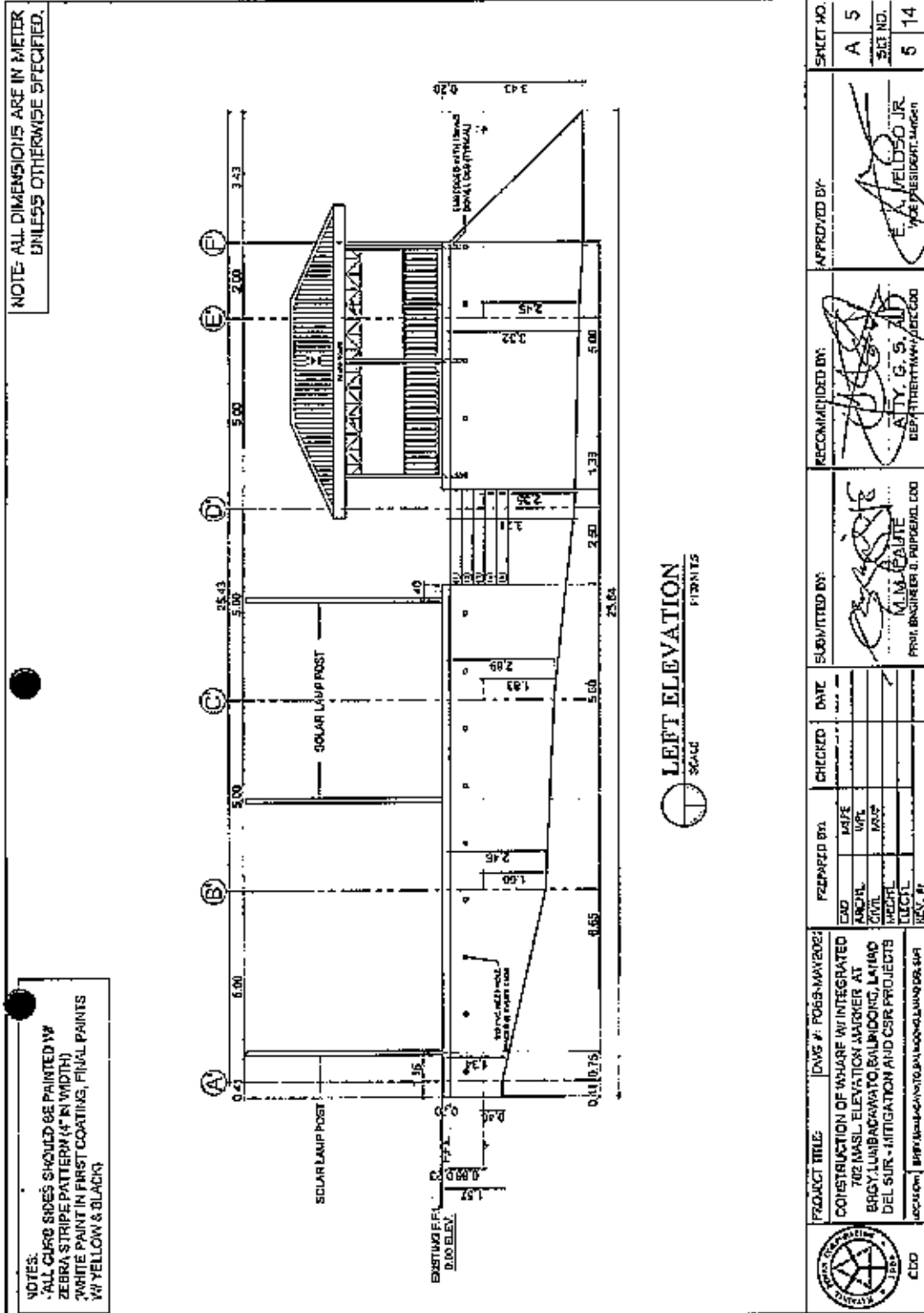
	PROJECT TITLE	DWG #	FORG-MAYEDG	DATE	CHECKED	DATE	SUBMITTED BY	RECOMMENDED BY	APPROVED BY:	SHEET NO
	CONSTRUCTION OF WHARF WITH INTEGRATED 702 MASL ELEVATION MARKER AT BRGY LUMBACAWATO, BALINDONG, LANA DEL SUR - MITIGATION AND CSR PROJECTS	1						M. M. FARBIE PEN ENGINEER B. PROFESSIONAL CCG	ATTY. G. S. S. S. S. REALTY INVESTMENT BROKER CCG	L. A. VELDSO JR. VICE PRESIDENT, JAMBO
	PREPARED BY	DATE	DATE	DATE	DATE	DATE	DATE	DATE	DATE	DATE
	SCALE	DATE	DATE	DATE	DATE	DATE	DATE	DATE	DATE	DATE
	DATE	DATE	DATE	DATE	DATE	DATE	DATE	DATE	DATE	DATE
	DATE	DATE	DATE	DATE	DATE	DATE	DATE	DATE	DATE	DATE

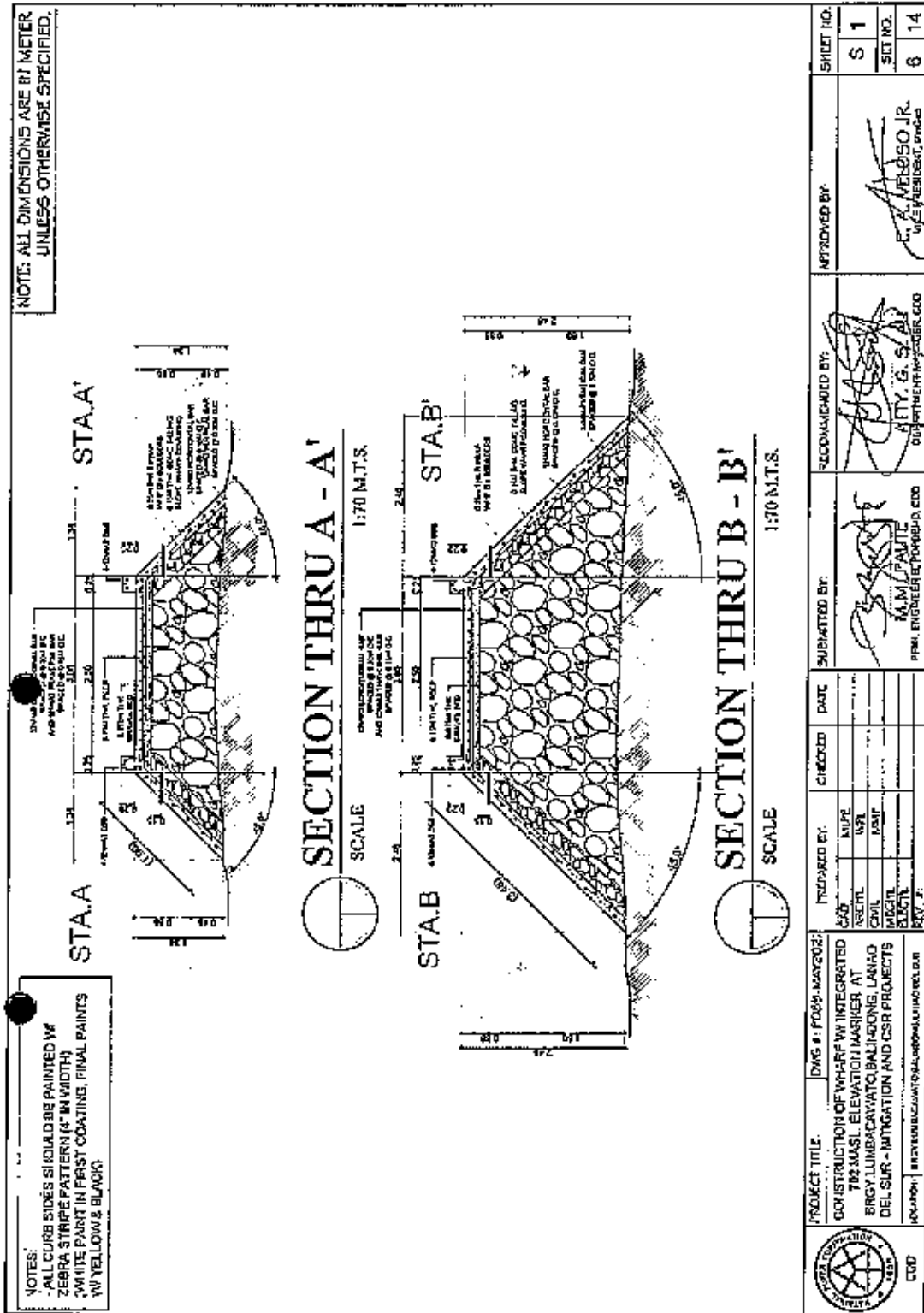




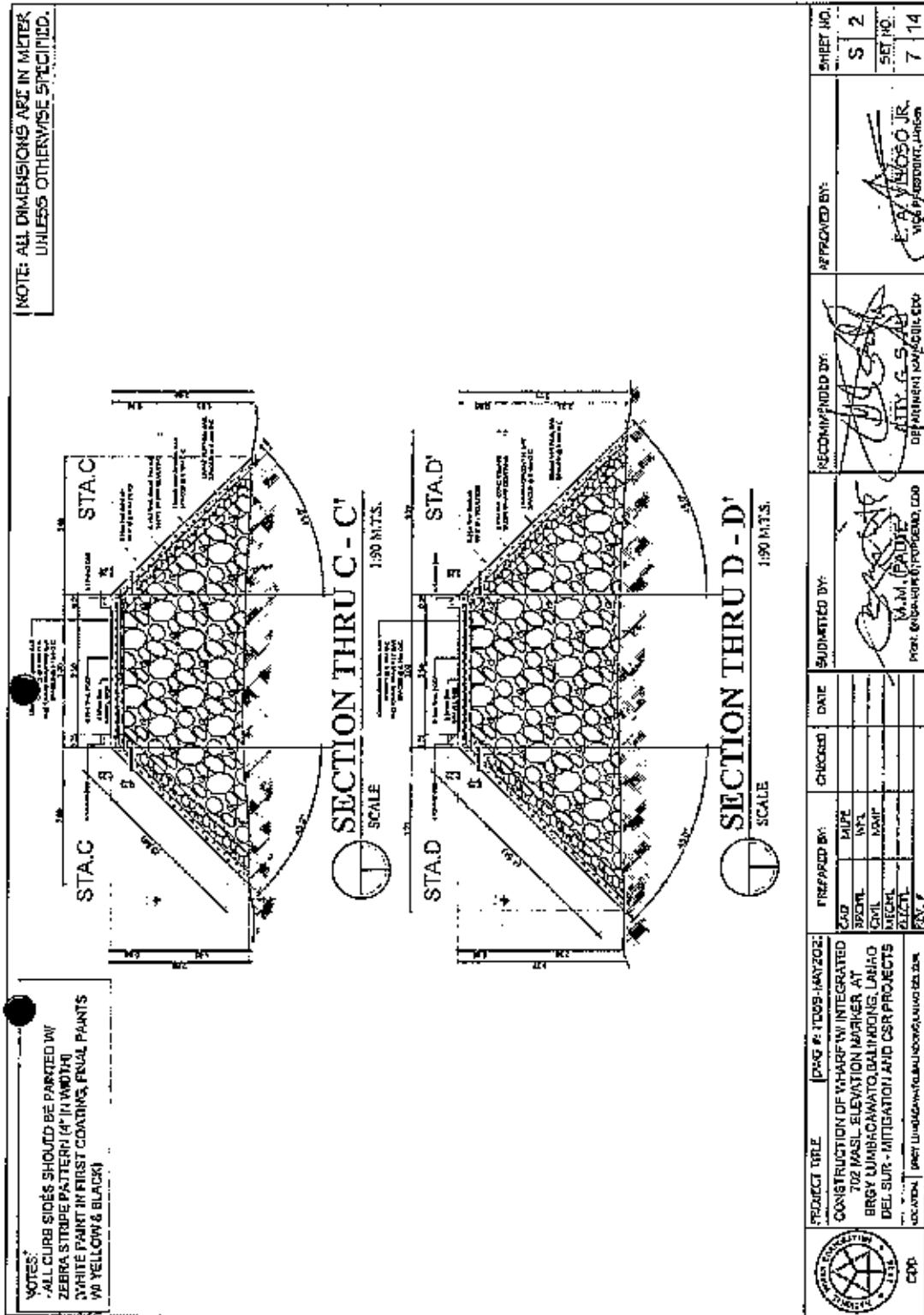


 CDD	PROJECT TITLE: DWG. AT FOUR-MAYE2022 CONSTRUCTION OF WHARF W/ INTEGRATED 702 MASL ELEVATION MARKER AT BRYG LUMBACAWALO, BALINDONG, LANAO DEL SUR - MITIGATION AND CSR PROJECTS	PREPARED BY: CAD: _____ ARCHT: _____ CIVIL: _____ MECH: _____ ELECTR: _____ REV. F: _____	CHECKED DATE: _____ DATE: _____	SUBMITTED BY:  M. M. PADILLA PROJECT MANAGER & SUPERVISOR, CDD	RECOMMENDED BY:  ATTY. G. S. AL DEPARTMENT MANAGER, CDD	APPROVED BY:  E. AVELESO JR. PROJECT SUPERVISOR, CDD	SHEET NO. A 4 SET NO. 4 14
--	---	---	------------------------------------	---	---	--	-------------------------------------

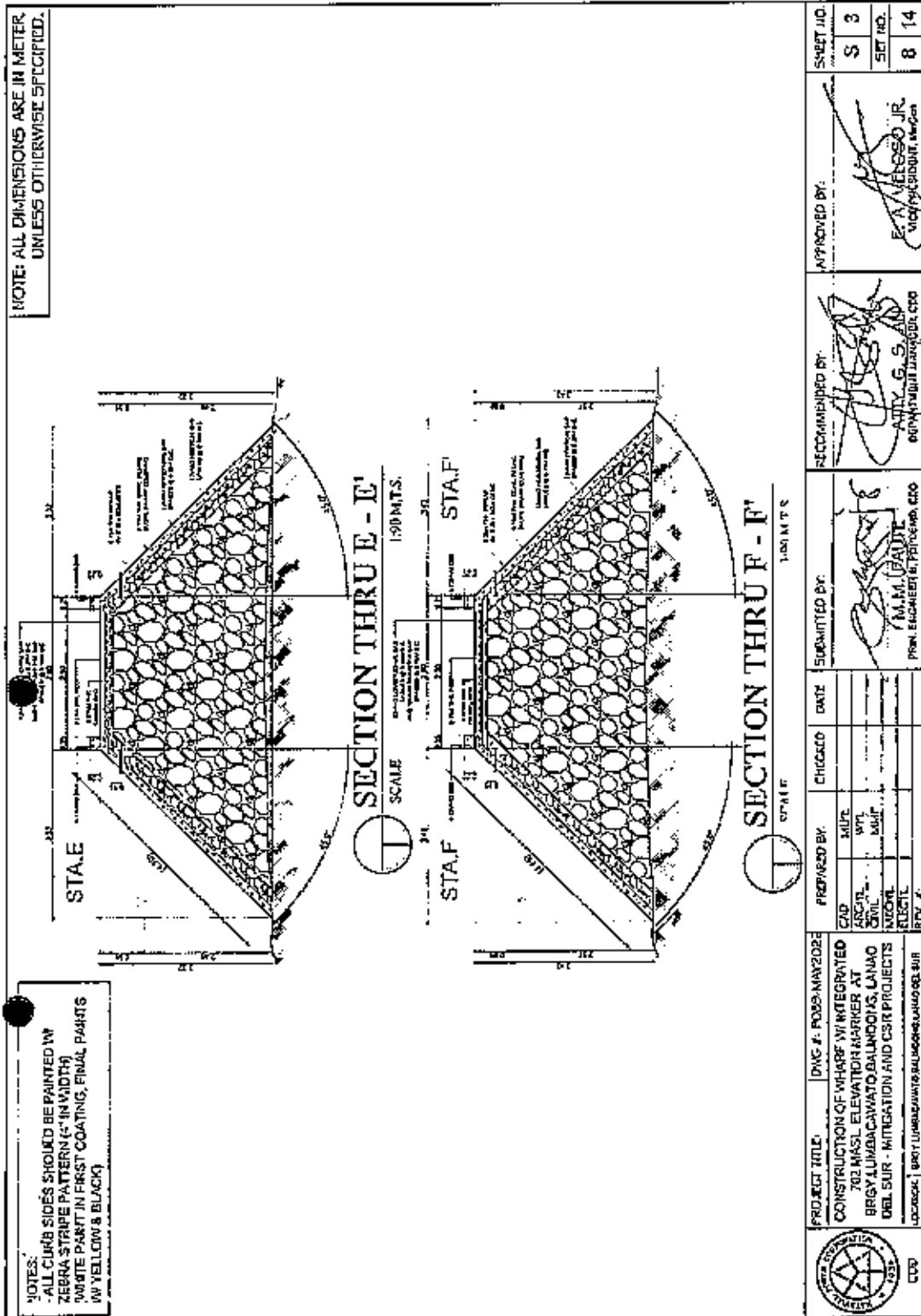








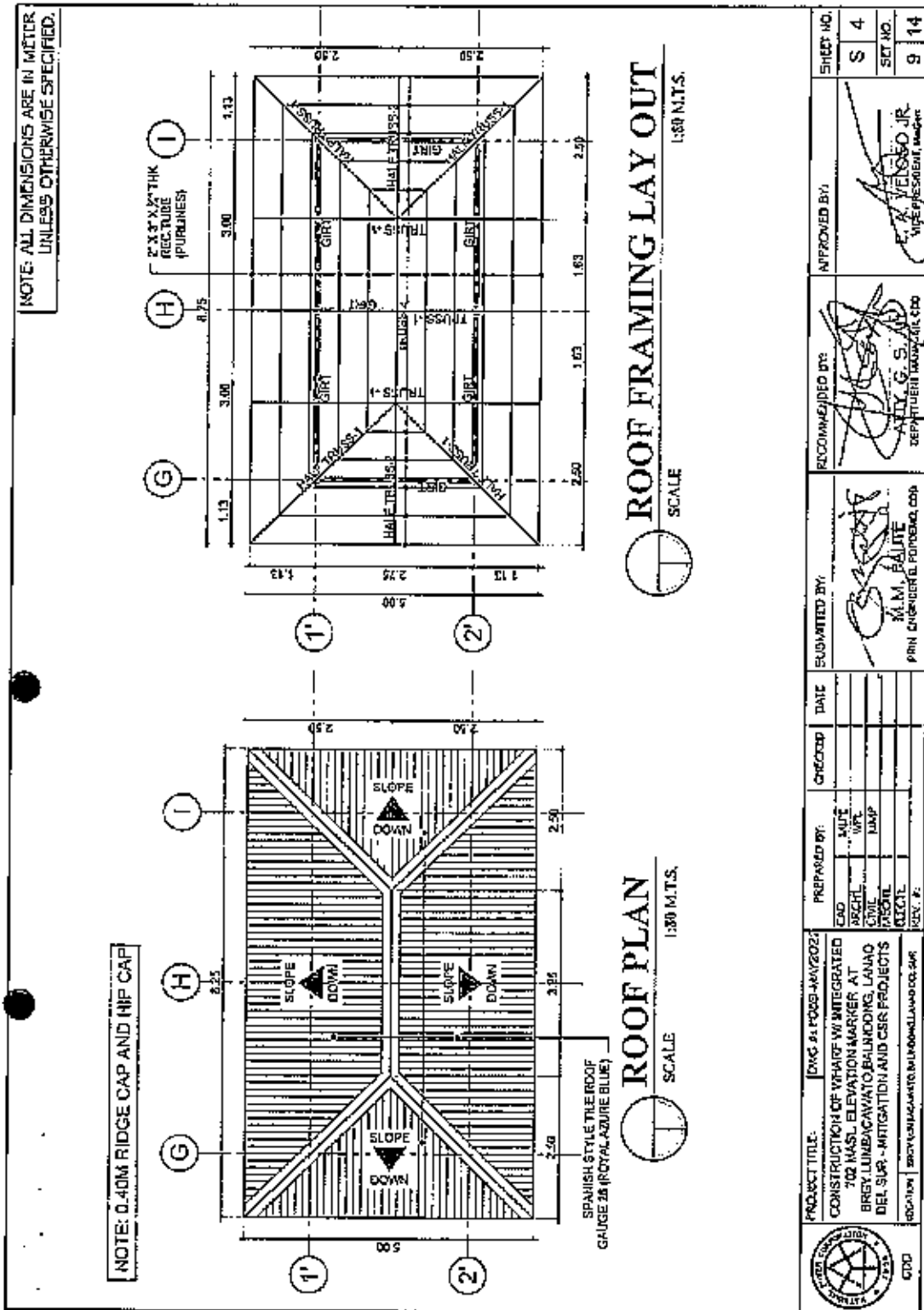
	PROJECT TITLE:	DMS # F02B-MAN202	PREPARED BY:	CHECKED	DATE	SUBMITTED BY: M.M. PAULTE PRIN. ENGINEER/PROJECTOR CDD	RECOMMENDED BY: G. S. A. B. A. DEPARTMENT MANAGER CDD	APPROVED BY: E. A. VELOSO JR. CDD REPRESENTATIVE	SHEET NO.
	CONSTRUCTION OF WHARF WITH INTEGRATED 702 MASI ELEVATION MARKER AT BRGY LUMBACAWATO, BALINDONG, LANAO DEL SUR - INTEGRATION AND CSR PROJECTS	AC-UP-1 INTY-TECH-2022-010-000-000-000-000-000	CDD	ASST. CIVIL CIVIL MECH. ELEC. RVT. #					
									6 14

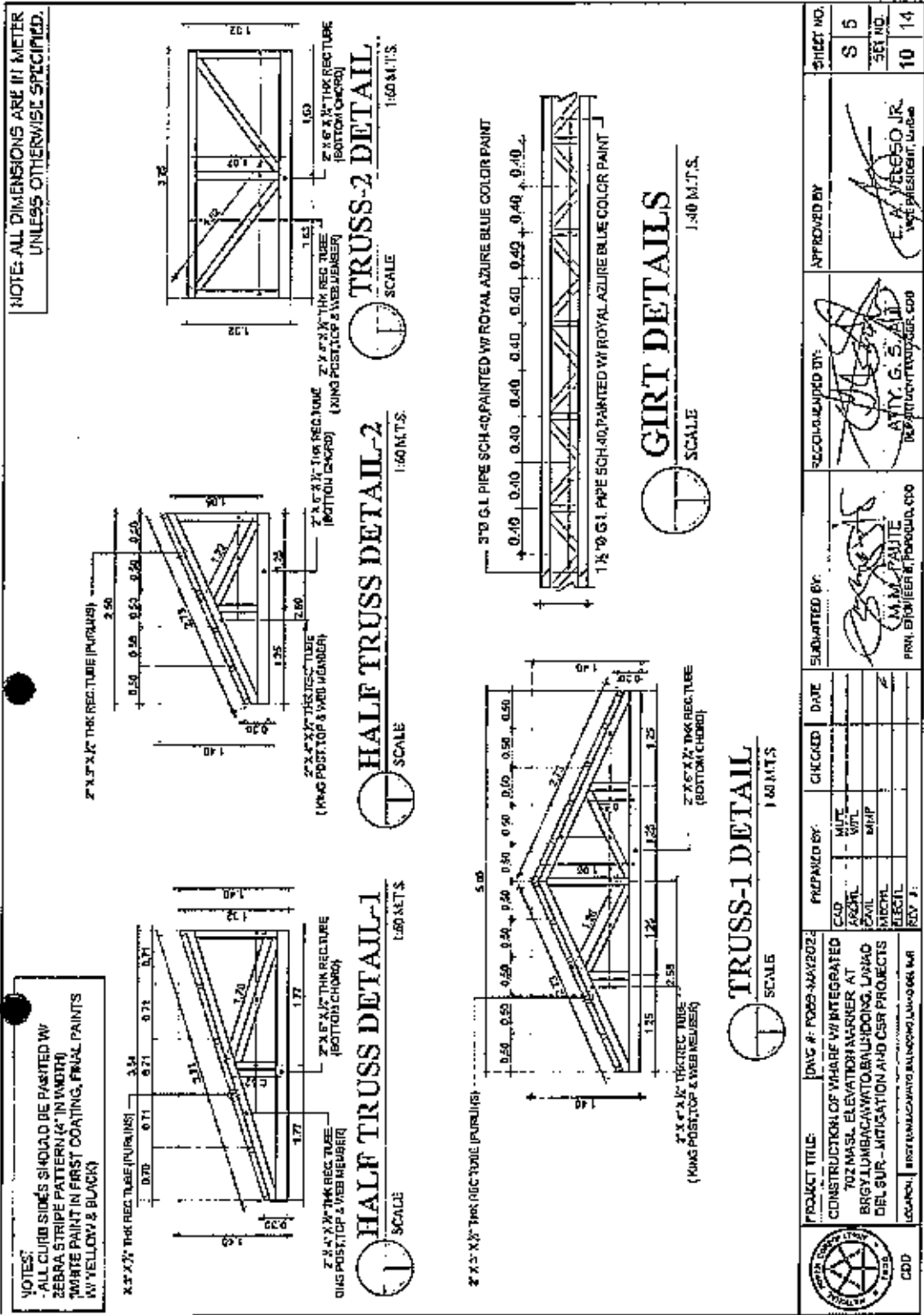


	PROJECT TITLE	PREPARED BY:	CHECKED	DATE	SUBMITTED BY:	RECOMMENDED BY:	APPROVED BY:	SHEET NO.
	CONSTRUCTION OF WHARF W/ INTEGRATED 702 MAST ELEVATION MARKER AT BRGY LUMBACAWATO, BALINDONG, LANAO DEL SUR - MITIGATION AND CSR PROJECTS LOCATION: BRGY LUMBACAWATO, BALINDONG, LANAO DEL SUR	DAUPE INTS CIVIL MECH ELEC ENV				M. M. PADE MGR. ENGINEERING DIVISION, CDD	DEPARTMENT ENGINEER, CDD	E. A. VILCOSO JR. MGR. ENGINEERING DIVISION, CDD



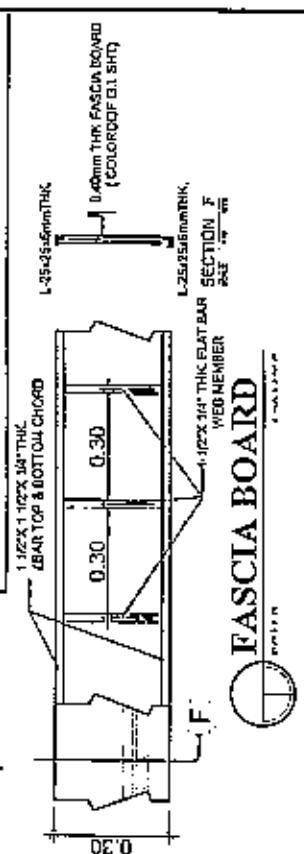
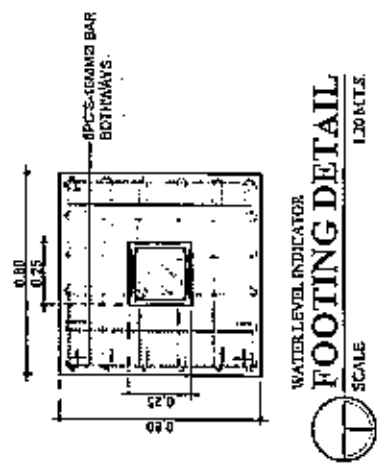
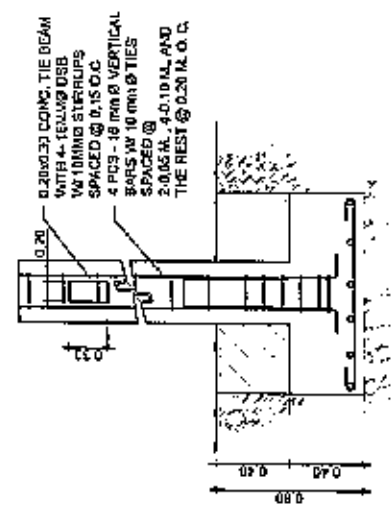
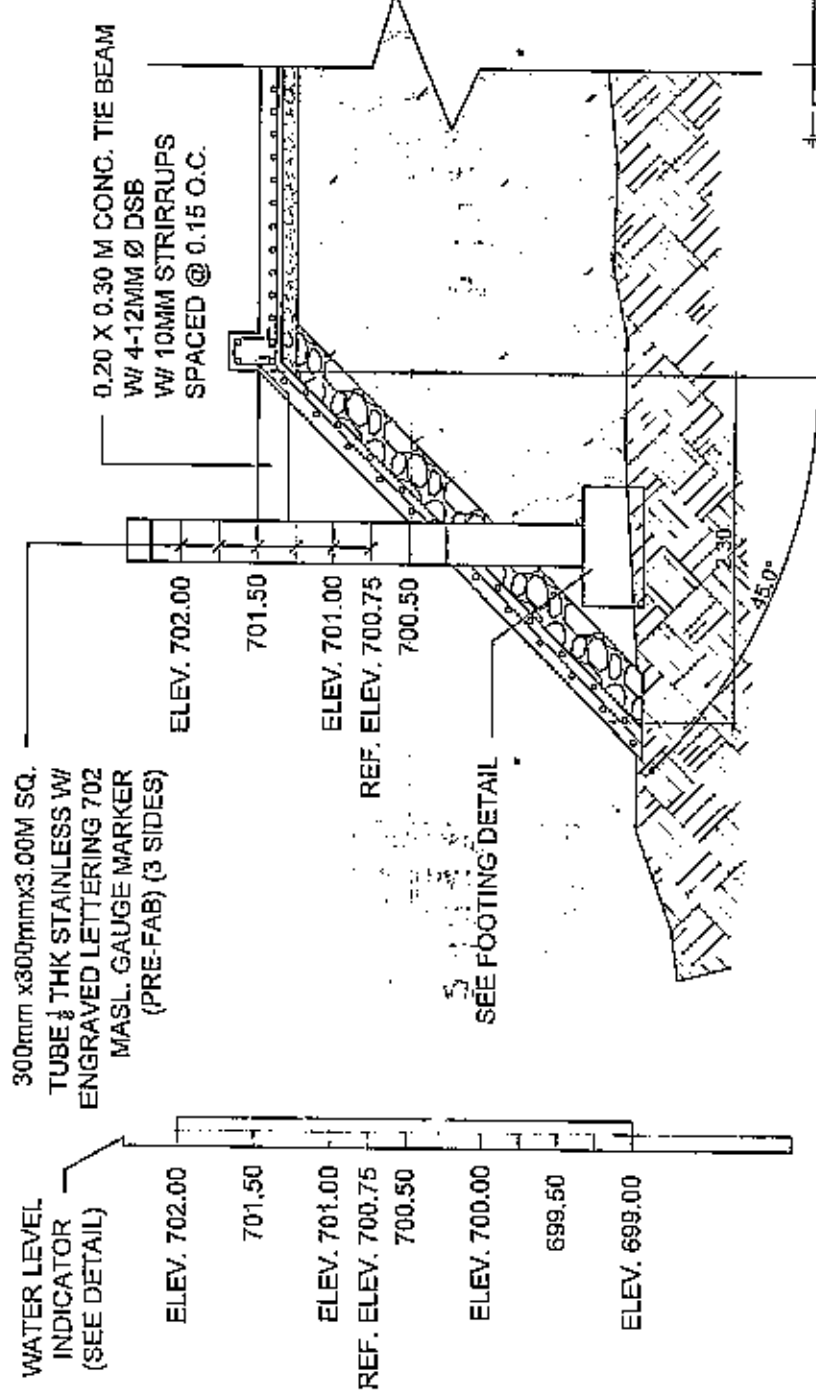
	PROJECT TITLE:	DVG #: P029-MAY2022			
	CONSTRUCTION OF WHARF WITH INTEGRATED 702 MAST ELEVATION MARKER AT BRGY LUMBACAWATO, BALINDONG, LANAO DEL SUR - MITIGATION AND CSR PROJECTS				
LOCATION:	BRGY LUMBACAWATO, BALINDONG, LANAO DEL SUR				
PREPARED BY:	CAD	CHICKO	DATE		
	ARCIB				
	ENGR				
	MECH				
	ELECT				
REV. #:					
SUBMITTED BY:	 M.M. UBADE PRIN. ENGINEER AT PRINCIPAL, CDD				
RECOMMENDED BY:	 ATTY. G.S. ABO DIVISION CHIEF, CDD				
APPROVED BY:	 E.A. VENSOSO JR. VICE DIVISION CHIEF, CDD				
SHEET NO.:	S	3			
SET NO.:	8	14			





NOTE: ALL DIMENSIONS ARE IN METERS UNLESS OTHERWISE SPECIFIED.

NOTES:
 - ALL CURB SIDES SHOULD BE PAINTED W/ ZEBRA STRIPE PATTERN (4" IN WIDTH) W/ WHITE PAINT IN FIRST COATING, FINAL PAINTS W/ YELLOW & BLACK



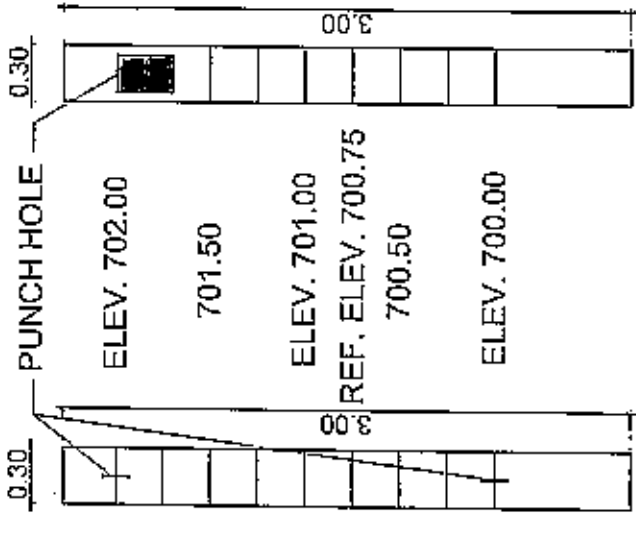
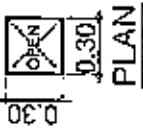
WHARF TYP. SECTION DET.
 SCALE 1:50 M.T.S.

PROJECT TITLE: CONSTRUCTION OF WHARF W/ INTEGRATED 702 MASL. ELEVATION MARKER AT BRGY. LUMBACAWATO, BALINDONG, LANAO DEL SUR - MITIGATION AND CSR PROJECTS	DWG #: PO89-MAY2024	PREPARED BY: CAD: MUP ARCHT: WFL CIVIL: MMF MECH: MCHT ELECT: ...	CHECKED	DATE	SUBMITTED BY: <i>[Signature]</i> M.M. LAUTE PRIN. ENGINEER B. PDPEMD, CDD	RECOMMENDED BY: <i>[Signature]</i> ATY. G. S. ALI DEPARTMENT MANAGER, CDD	APPROVED BY: <i>[Signature]</i> E. A. MELOSO JR. VICE PRESIDENT, ManGen	SHEET NO. S 6
								SET NO. 11 14
LOCATION: BRGY. LUMBACAWATO, BALINDONG, LANAO DEL SUR								



NOTE: ALL DIMENSIONS ARE IN METERS UNLESS OTHERWISE SPECIFIED.

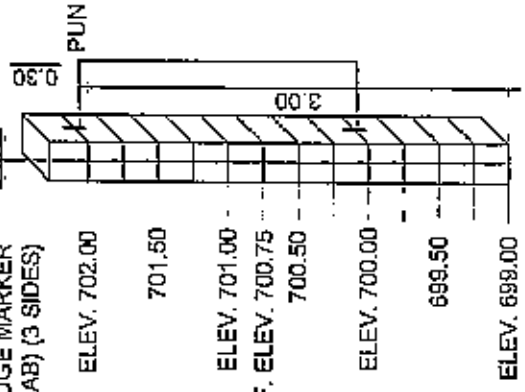
300mm x 300mm x 3.00M SQ.
 TUBE 1/8 THK STAINLESS W/ ENGRAVED LETTERING 702 MASL. GAUGE MARKER (PRE-FAB) (3 SIDES)



FRONT

BACK

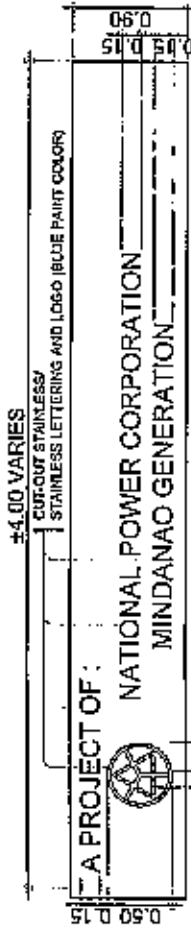
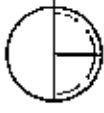
300mm x 300mm x 3.00M SQ.
 TUBE 1/8 THK STAINLESS W/ ENGRAVED LETTERING 702 MASL. GAUGE MARKER (PRE-FAB) (3 SIDES)



ISOMETRIC DRAWING

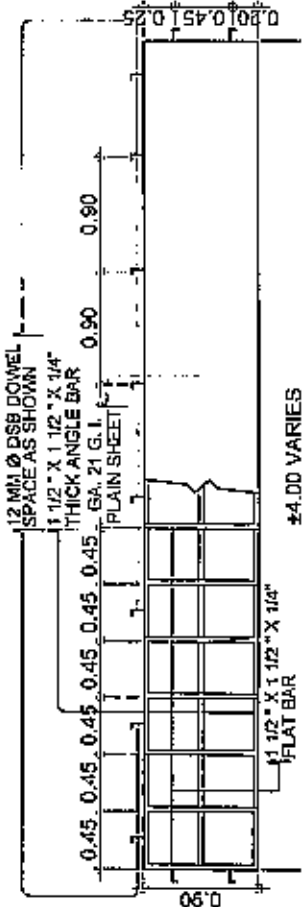
WATER LEVEL GAUGE METER

SCALE 1:40 M.T.S.



DETAIL OF LETTERING

SCALE 1:60 M.T.S.



SIGNAGE DETAIL

SCALE 1:80 M.T.S.

PROJECT TITLE:	DWG #: P089-MAY2024	PREPARED BY:	CAD	MIPE	CHECKED	DATE	SUBMITTED BY:	RECOMMENDED BY:	APPROVED BY:	SHEET NO.
		CONSTRUCTION OF WHARF W/ INTEGRATED 702 MASL. ELEVATION MARKER AT BRGY. LUMBACAWATO, BALINDONG, LANAO DEL SUR - MITIGATION AND CSR PROJECTS	ARCH/IL	WFL				M.M. PAUTE PRIN. ENGINEER B. POPDEAD, CDD	ATY. G. S. ALI DEPARTMENT MANAGER, CDD	E. A. VELOSO JR. VICE PRESIDENT, Mingon
LOCATION:	BRGY. LUMBACAWATO, BALINDONG, LANAO DEL SUR	CIVIL	MMP							SET NO.
		MIC/CHL.								12
		ELECTL.								14



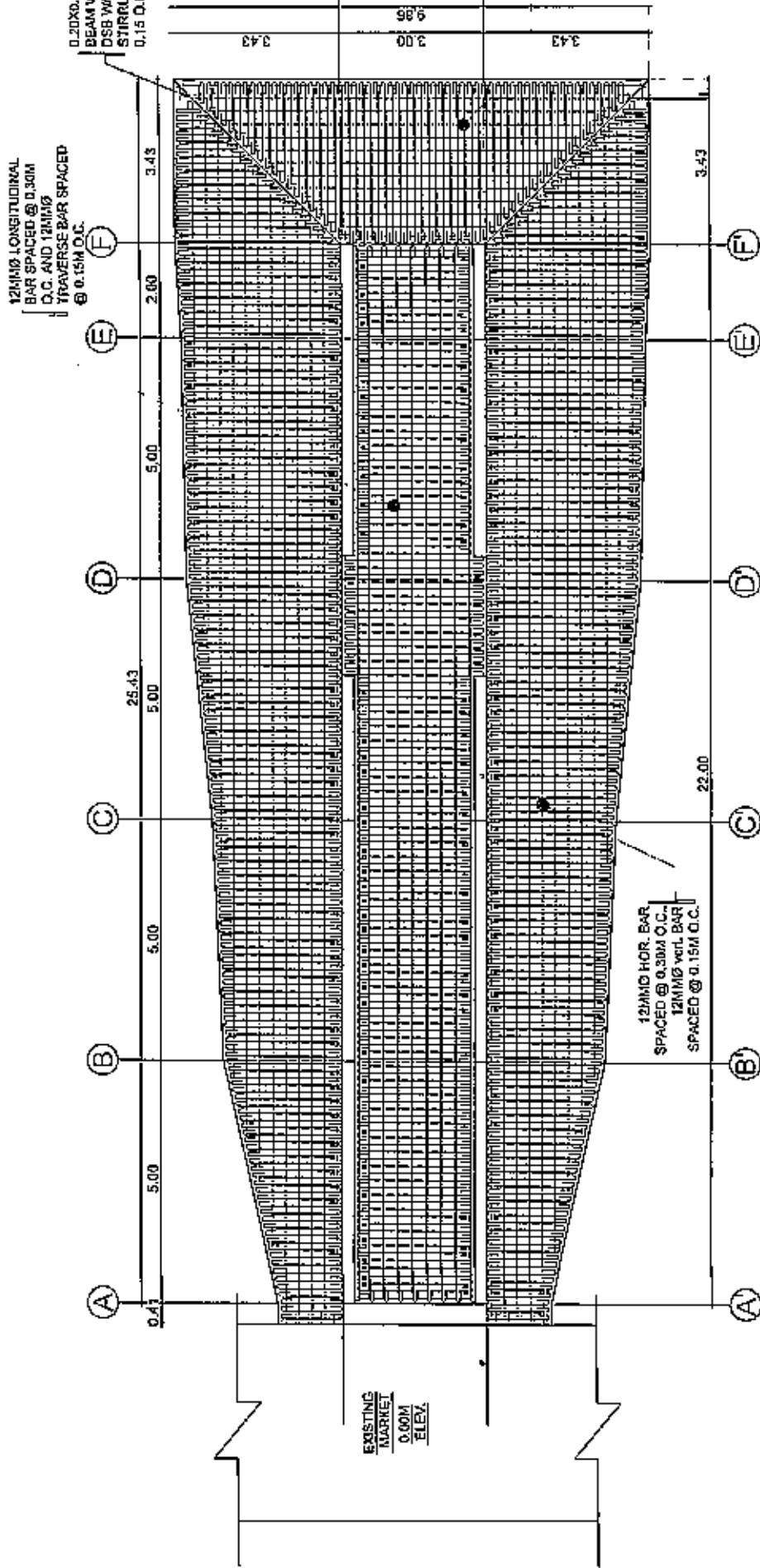
CDD

NOTE: ALL DIMENSIONS ARE IN METER
UNLESS OTHERWISE SPECIFIED.

12MM ϕ LONGITUDINAL
BAR SPACED @ 0.30M
O.C. AND 12MM ϕ
TRANSVERSE BAR SPACED
@ 0.15M O.C.

0.20X0.25 CONIC. TIE
BEAM WITH 4- 12MM ϕ
DSB W/ 10MM ϕ
STIRRUPS SPACED @
0.15 O.C. (TYPICAL)

12MM ϕ HOR. BAR
SPACED @ 0.15M O.C.
12MM ϕ VERT. BAR
SPACED @ 0.30M O.C.



WHARF REBARS

LAY OUT DETAIL

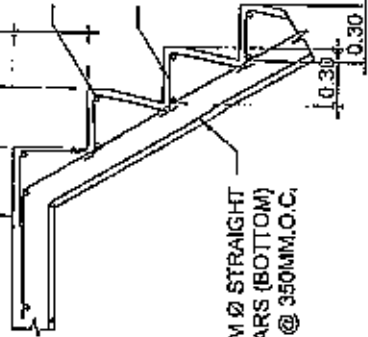
SCALE 1:300 M.J.S

PROJECT TITLE: CONSTRUCTION OF WHARF W/ INTEGRATED 702 MASL. ELEVATION MARKER AT BRGY. LUMBACAWATO, BALINDONG, LANAO DEL SUR - MITIGATION AND CSR PROJECTS	DWG #: POB9-MAY2022	PREPARED BY	CHECKED	DATE	SUBMITTED BY: <i>M.M. LPAUTE</i> PRIN. ENGINEER B. PUPDENID, CDD	RECOMMENDED BY: <i>AVY. G. S. AUSTIN</i> DEPARTMENT MANAGER, CDD	APPROVED BY: <i>E. A. VELOSO JR.</i> VICE PRESIDENT, MINDGEN	SHEET NO.
								S 8
LOCATION: BRGY. LUMBACAWATO, BALINDONG, LANAO DEL SUR								SET NO.
								13
								14



CDD

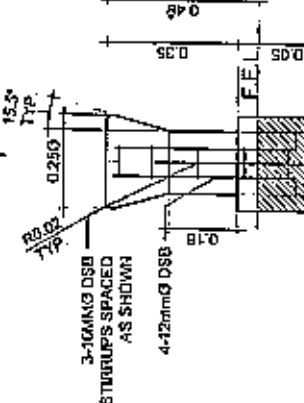
16mm Ø STRAIGHT BARS (TOP) SPCD. @ 350mm O.C.



STAIRS DETAILS

SCALE

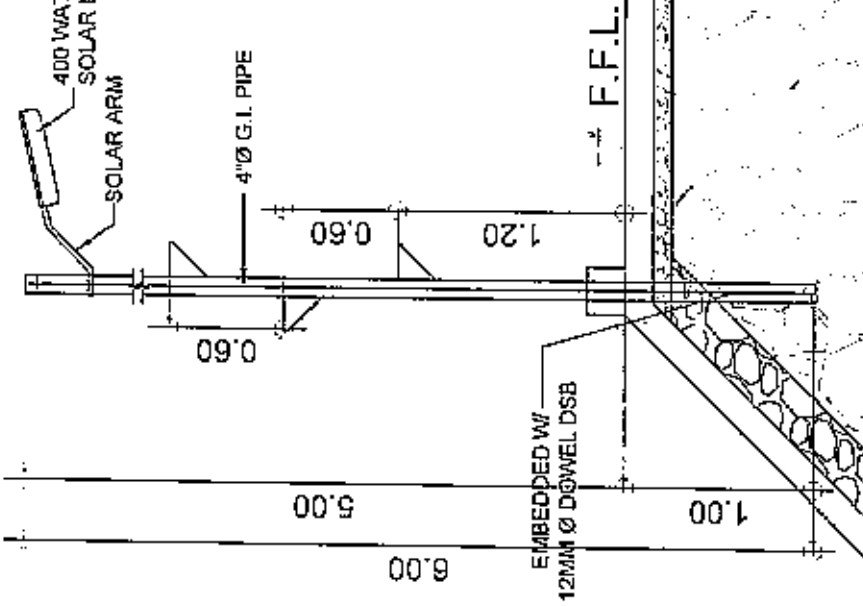
3-10MM Ø DSB STIRRUPS SPACED AS SHOWN
4-12MM Ø DSB



CONC. BOLLARD DETAIL

SCALE 1:30 M.T.S.

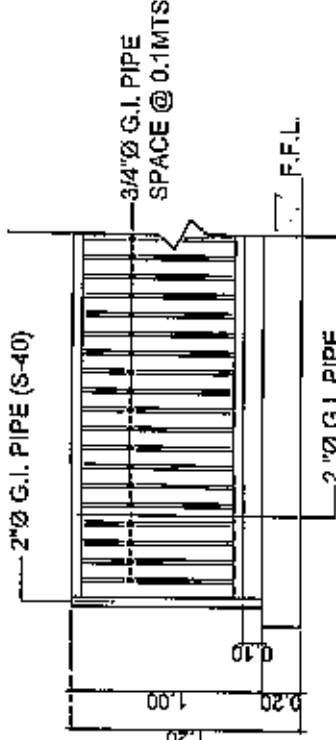
NOTE: ALL DIMENSIONS ARE IN METER UNLESS OTHERWISE SPECIFIED.



SOLAR LAMP POST DETAIL

SCALE 1:40 M.T.S.

NOTES: PAINTED W/ WHITE COLOR PAINT ALL RAILING MATERIALS



RAILING DETAIL

SCALE 1:40 M.T.S.



PROJECT TITLE: DWG # F089-MAY2022
CONSTRUCTION OF WHARF W/ INTEGRATED 702 MASL ELEVATION MARKER AT BRGY. LUMBACAWATO, BALINDONG, LANAO DEL SUR - MITIGATION AND CSR PROJECTS
LOCATION: BRGY. LUMBACAWATO, BALINDONG, LANAO DEL SUR

PREPARED BY:	CHECKED	DATE	SUBMITTED BY:
CAD: MLPE			 M.M. FAUTE PRIN. ENGINEER-B-PDP/PGMD, CDD
ARCHT.: WFL			
CIVIL: MMF			
MECHL:			
ELECTL:			

RECOMMENDED BY:

 ATTY. G. S. ALDEGUER
 DEPT. MENTOR/ASSER, CDD

APPROVED BY:

 E. A. VELOSO JR.
 VICE PRESIDENT, MINSUP

SHEET NO. S 9
SET NO. 14 | 14

BID DOCUMENTS

NAME OF PROJECT: Construction of Wharf with Integrated 702 Masl
Elevation Marker at Brgy. Lumbacawato, Balindong,
Lanao del Sur

SECTION VIII- BILL OF QUANTITIES

PR NO/REF. NO.: MG-COM22-020/INFR2022-CDD-039

Section VIII- Bill of Quantities

Name of Project: CONSTRUCTION OF WHARF WITH INTEGRATED 702 MASL ELEVATION MARKER AT BRGY. LUMBACAWATO, BALINDONG, LANA DEL SUR
PR #: MG-COM22-020

SECTION VIII - BILL OF QUANTITIES

BILL OF QUANTITIES

Item No.	Description of Work or Materials	Unit	Estimated Quantity	Unit Price in Pesos (Words and Figures)	Total Amount
I	CLEARING AND SITE PREPARATION	SQ.M.	250.00	(PHP)	(PHP)
II	EARTHWORKS EARTHFILLING/ Backfilling (Boulders)	CU.M.	347.00	(PHP)	(PHP)
III	CONCRETE WORKS	CU.M.	49.00	(PHP)	(PHP)
IV	REINFORCEMENT STEEL BAR/ DSB WORKS	KGS.	3723.00	(PHP)	(PHP)
V	ROOFING, TRUSSES, RAILINGS AND LIGHTING WORKS	LOT	1.00	(PHP)	(PHP)
VI	PAINTING WORKS	LOT	1.00	(PHP)	(PHP)
VII	PROJECT LANDMARK ELEV. 702 MASL GAUGE MARKER AND SIGNAGE WITH STAINLESS LETTERING WORKS	LOT	1.00	(PHP)	(PHP)
				TOTAL (PHP)	

Name of Firm

Name and Signature of Authorized Representative

Designation

BID DOCUMENTS

NAME OF PROJECT: Construction of Wharf with Integrated 702 Masl
Elevation Marker at Brgy. Lumbacawato, Balindong,
Lanao del Sur

SECTION IX- CHECKLIST OF TECHNICAL AND
FINANCIAL DOCUMENTS

PR NO./REF. NO.: MG-COM22-020/INFR2022-CDD-039

Section IX. Checklist of Technical and Financial Documents

Checklist of Technical and Financial Documents

- I. TECHNICAL COMPONENT ENVELOPE/*Submit in three (3) copies- one (1) marked Original with the understanding that the Pass/Fail evaluation will be based only on the copy marked "Original"*

Class "A" Documents

Legal Documents

- (a) Valid and updated PhilGEPS Registration Certificate (Platinum Membership) (all pages)*in accordance with Section 8.5.2 of the IRR; or*

Technical Documents

- (b) Statement of the prospective bidder of all its ongoing government and private contracts, including contracts awarded but not yet started, if any, whether similar or not similar in nature and complexity to the contract to be bid, *using NPC-MinGen Standard Form No. NPCMGNSF-INFR-01; and*
- (c) Statement of the bidder's Single Largest Completed Contract (SLCC) similar to the contract to be bid, except under conditions provided under the rules, *using NPC-MinGen Standard Form No. NPCMGNSF-INFR-02 supported with the following documents:*
- *Contract and/or Notice to Proceed;*
 - *For project completed within the year, submit Certificate of Completion;*
 - *For project completed after the lapse of one year, submit Owner's Certificate of Final Acceptance issued by the project owner other than the contractor, or a final rating of at least Satisfactory in the Constructor's Performance Evaluation System (CPES);*
 - *In case of contracts with the private sector, an equivalent document (Ex. Official receipt) shall be submitted.*
- (d) and Special PCAB License in case of Joint Ventures; and registration for the type and cost of the contract to be bid; and
- (e) Original copy of Bid Security. If in the form of a Surety Bond, *using NPC-MinGen Standard Form No. NPCMGNSF-INFR-03a*, submit also a certification issued by the Insurance Commission; or Original copy of Notarized Bid Securing Declaration using *NPC-MinGen Standard Form No. NPCMGNSF-INFR-03b*; and
- (f) Project Requirements, which shall include the following:
- a. Organizational chart for the contract to be bid *using NPC-MinGen Standard Form No. NPCMGNSF-INFR-04;*
 - b. List of contractor's key personnel (e.g., Project Manager, Project Engineers, Materials Engineers, and Foremen), to be assigned to the

- contract to be bid, with their complete qualification and experience data, using NPC-MinGen Standard Form No. NPCMGNSF-INFR-05, 6a, 6b & 07;
- c. List of contractor's major equipment units, which are owned, leased, and/or under purchase agreements, supported by proof of ownership or certification of availability of equipment from the equipment lessor/vendor for the duration of the project, as the case may be, using NPC-MinGen Standard Form No. NPCMGNSF-INFR-08 and its supporting documents; and
 - (g) Original duly signed Omnibus Sworn Statement (OSS), using any of the following NPC-MinGen Standard Forms No.:
NPCMGNSF-INFR-09a – for Sole Proprietorship;
or
NPCMGNSF-INFR-09b – for Partnership/Cooperative/Corporation/ Joint Venture with the following supporting documents:

and if applicable, Original Notarized Secretary's Certificate in case of a corporation, partnership, or cooperative; or Original Special Power of Attorney of all members of the joint venture giving full power and authority to its officer to sign the OSS and do acts to represent the Bidder.

Financial Documents

- (h) The prospective bidder's computation of Net Financial Contracting Capacity (NFCC) using NPC-MinGen Standard Form No. NPCMGNSF-INFR-10.

Class "B" Documents

- (i) If applicable, duly signed joint venture agreement (JVA) in accordance with RA No. 4566 and its IRR in case the joint venture is already in existence, using NPC-MinGen Standard Form No. NPCMGNSF-INFR-11;
or
 duly notarized statements from all the potential joint venture partners stating that they will enter into and abide by the provisions of the JVA in the instance that the bid is successful.

II. FINANCIAL COMPONENT ENVELOPE *[Submit in three (3) copies- one (1) marked Original with the understanding that the Pass/Fail evaluation will be based only on the copy marked "Original"]*

- (j) Original of duly signed (each and every page) and accomplished Financial Bid Form, using NPC-MinGen Standard Form No. NPCMGNSF-INFR-12;
and
Other documentary requirements under RA No. 9184
- (k) Original of duly signed (each and every page) Bid Prices in the Bill of Quantities, using given form in Section VIII; and
- (l) Duly signed (each and every page) and accomplished Detailed Estimates Form using NPC-MinGen Standard Form No. NPCMGNSF-INFR-13, including a summary sheet indicating the unit prices of construction

BID DOCUMENTS

NAME OF PROJECT: Construction of Wharf with Integrated 702 Mast
Elevation Marker at Brgy. Lumbacawato, Balindong,
Lanao del Sur

SECTION IX- CHECKLIST OF TECHNICAL AND
FINANCIAL DOCUMENTS

PR NO./REF. NO.: MG-COM22-020/INFR2022-GDD-039

materials, labor rates, and equipment rentals used in coming up with the
Bid using NPC form NPCMGNSF-INFR-14; and

- (m) Cash Flow by Quarter or Month, as applicable (duly signed each and every page)

STANDARD BIDDING FORMS

NPC-MINDANAO GENERATION

- NPCMGNSF-INFR-01 - List of all Ongoing Government & Private Construction Contracts Including Contracts Awarded but not yet Started
- NPCMGNSF-INFR-02 - Statement of the Bidder's Single Largest Completed Contract (SLCC) similar to the contract to be bid
- NPCMGNSF-INFR-03a - Form of Bid Security : Surety Bond
- NPCMGNSF-INFR-03b - Bid Securing Declaration Form
- NPCMGNSF-INFR-04 - Contractor's Organizational Chart for the Project
- NPCMGNSF-INFR-05 - List of Key Personnel Proposed to be Assigned to the Project
- NPCMGNSF-INFR-6a - Key Personnel's Certificate of Employment (Professional Personnel)
- NPCMGNSF-INFR-6b - Key Personnel's Certificate of Employment (Construction Safety and Health Practitioner)
- NPCMGNSF-INFR-07 - Key Personnel's Bio-Data
- NPCMGNSF-INFR-08 - List of Equipment, Owned or Leased and/or under Purchase Agreement, Pledged to the Proposed Project
- NPCMGNSF-INFR-09a - Omnibus Sworn Statement (Sole Proprietorship)
- NPCMGNSF-INFR-09b - Omnibus Sworn Statement (Partnership/ Cooperative/Corporation//Joint Venture)
- NPCMGNSF-INFR-10 - Computation of Net Financial Contracting Capacity (NFCC)
- NPCMGNSF-INFR-11 - Joint Venture Agreement
- NPCMGNSF-INFR-12 - Bid Form
- NPCMGNSF-INFR-13 - Detailed Cost Estimate Form
- NPCMGNSF-INFR-14 - Summary Sheets of Materials Prices, Labor Rates and Equipment Rental Rates

BID DOCUMENTS

NAME OF PROJECT: Construction of Wharf with Integrated 702 Masl Elevation Marker at Brgy. Lumbacawato, Balindong, Lanao del Sur

SECTION IX- CHECKLIST OF TECHNICAL AND FINANCIAL DOCUMENTS

PR. NO./REF. NO.: MG-COM22-020/INFR2022-CDD-039

Standard Form Number : NPCMGN5F-INFR-01

List of All Ongoing Government and Private Construction Contracts Including

Business Name : _____
Business Address : _____

Name of Contract/Location/ Project Cost	a. Owner's Name b. Address c. Telephone Nos.	Nature of Work	Contractor's Role	
			Description	%
Government				
Private				

The bidder shall declare in this form all his on-going government and private contracts including contracts where the bidder (or agreement other than his current joint venture where he is a partner. Non declaration will be a ground for disqualification of bid.

Note: This statement shall be supported with Contract and/or Notice of Award (to be presented by the winning bid)

Submitted by : _____
(Printed Name & Signature)

Designation : _____

Date : _____

BID DOCUMENTS

NAME OF PROJECT: Construction of Wharf with Integrated 702 Mast Elevation Marker at Brgy. Lumbacavato, Balindang, Lanao del Sur

SECTION IX- CHECKLIST OF TECHNICAL AND FINANCIAL DOCUMENTS

PR NO./REF. NO.: MG-COM22-020/INFR2022-CDD-039

Standard Form Number : NPCMGN5F-INFR-02

The Statement of the Bidder's Single Largest Completed Contract (SLCC)

Business Name : _____
Business Address : _____

Name of Contract	a. Owner's Name b. Address c. Telephone Nos.	Nature of Work	Contractor's Role	
			Description	%

Note: The bidder must state only one (1) Single Largest Completed Contract (SLCC) similar to the contract to b shall be supported with:

1. Contract and Notice to Proceed
2. Certificate of Completion (for project completed within the year), or Owner's Certificate of Final Acceptance (for project owner other than the contractor), or a final rating of at least Satisfactory in the Constructor; the private sector, an equivalent document (Ex. Official Receipt) shall be accepted.

Submitted by : _____
 (Printed Name & Signature)

Designation : _____

Date : _____

FORM OF BID SECURITY (SURETY BOND)

BOND NO.: _____ DATE BOND EXECUTED: _____

By this bond, We (Name of Bidder) (hereinafter called "the Principal") and (Name of Surety) of (Name of Country of Surety) , authorized to transact business in the Philippines (hereinafter called "the Employer") as Obligee, in the sum of [amount in words & figures as prescribed in the bidding documents] , callable on demand, for the payment of which sum, well and truly to be made, we, the said Principal and Surety bind ourselves, our successors and assigns, jointly and severally, firmly by these presents.

SEALED with our seals and dated this _____ day of _____ 20_____

WHEREAS, the Principal has submitted a written Bid to the Employer dated the _____ day of _____ 20_____, for the _____ (hereinafter called "the Bid").

NOW THEREFORE, the conditions of this obligation are:

- 1) If the Bidder withdraws his Bid during the period of bid validity specified in the Bidding Documents; or
- 2) If the Bidder does not accept the correction of arithmetical errors of his bid price in accordance with the Instructions to Bidder; or
- 3) If the Bidder, having determined as the LCB, fails or refuses to submit the required tax clearance, latest income and business tax returns and PhilGEPS registration certificate within the prescribed period; or
- 4) If the bidder having been notified of the acceptance of his bid and award of contract to him by the Entity during the period of bid validity:
 - a) Fails or refuses to execute the Contract; or
 - b) Fails or refuses to submit the required valid JVA, if applicable; or
 - c) Fails or refuses to furnish the Performance Security in accordance with the Instruction to Bidders;

Then this obligation shall remain in full force and effect, otherwise it shall be null and void.

PROVIDED HOWEVER, that the Surety shall not be:

- a) Liable for a grater sum than the specified penalty of this bond, nor
- b) Liable for a greater sum that the difference between the amount of the said Principal's Bid and the amount of the Bid that is accepted by the Employer.

BID DOCUMENTS

NAME OF PROJECT: Construction of Wharf with Integrated 702 Masl
Elevation Marker at Brgy. Lumbacawato, Balindong,
Lanao del Sur

SECTION IX- CHECKLIST OF TECHNICAL AND
FINANCIAL DOCUMENTS

PR NO./REF. NO.: MG-COM22-020/INFR2022-CDD-039

Standard Form No: NPCMGNSF-INFR-03a

Page 2 of 2

This Surety executing this instrument hereby agrees that its obligation shall be valid for 120 calendar days after the deadline for submission of Bids as such deadline is stated in the Instructions to Bidders or as it may be extended by the Employer, notice of which extension(s) to the Surety is hereby waived.

PRINCIPAL

SURETY

SIGNATURE(S)

SIGNATURE(S)

NAME(S) AND TITLE (S)

NAME(S)

SEAL

SEAL

REPUBLIC OF THE PHILIPPINES)
CITY OF _____) S.S.

BID SECURING DECLARATION
Project Identification No.: *[Insert number]*

To: *[Insert name and address of the Procuring Entity]*

I/We, the undersigned, declare that:

1. I/We understand that, according to your conditions, bids must be supported by a Bid Security, which may be in the form of a Bid Securing Declaration.
2. I/We accept that: (a) I/we will be automatically disqualified from bidding for any procurement contract with any procuring entity for a period of two (2) years upon receipt of your Blacklisting Order; and, (b) I/we will pay the applicable fine provided under Section 6 of the Guidelines on the Use of Bid Securing Declaration, within fifteen (15) days from receipt of the written demand by the procuring entity for the commission of acts resulting to the enforcement of the bid securing declaration under Sections 23.1(b), 34.2, 40.1 and 69.1, except 69.1(f), of the IRR of RA No. 9184; without prejudice to other legal action the government may undertake.
3. I/We understand that this Bid Securing Declaration shall cease to be valid on the following circumstances:
 - a. Upon expiration of the bid validity period, or any extension thereof pursuant to your request;
 - b. I am/we are declared ineligible or post-disqualified upon receipt of your notice to such effect, and (i) I/we failed to timely file a request for reconsideration or (ii) I/we filed a waiver to avail of said right; and
 - c. I am/we are declared the bidder with the Lowest Calculated Responsive Bid, and I/we have furnished the performance security and signed the Contract.

IN WITNESS WHEREOF, I/We have hereunto set my/our hand/s this ____ day of *[month]* *[year]* at *[place of execution]*.

[Insert NAME OF BIDDER OR ITS AUTHORIZED REPRESENTATIVE]
[Insert signatory's legal capacity]
Affiant

[Jurat]

[Format shall be based on the latest Rules on Notarial Practice]

Standard Form No: NPCMGNSF-INFR-04

CONTRACTOR'S ORGANIZATIONAL CHART FOR THE CONTRACT

Submit Copy of the Organizational Chart that the Contractor intends to use to execute the Contract if awarded to him. Indicate in the chart the names of the Project Manager, Project Engineer, Foreman and other Key Engineering Personnel.

Attach the required Proposed Organizational Chart for the Contract as stated above.

NOTES:

1. *This organization chart should represent the "Contractor's Organization" required for the Project, and not the organizational chart of the entire firm.*
2. *Each such nominated engineer/key personnel shall comply with and submit their complete qualification and experience data.*
3. *All these are required to be in the Technical Envelope of the Bidder.*

BID DOCUMENTS

NAME OF PROJECT: Construction of Wharf with Integrated 702 Masl Elevation Marker at Brgy. Lumbacavato, Balindang, Lanao del Sur

SECTION IX- CHECKLIST OF TECHNICAL AND FINANCIAL DOCUMENTS

PR NO./REF. NO.: MG-COM22-020/INFR2022-ODD-039

Standard Form Number : NPCMGN5F-INFR-05

**LIST OF KEY PERSONNEL PROPOSED TO BE ASSIGNED TO THE CONTRACT
(Based on the Minimum Key Personnel Required in the Bidding Documents)**

Business Name : _____

Business : _____

		DESIGNATION		
1. Name	_____	_____	_____	_____
2. Address	_____	_____	_____	_____
3. Date of Birth	_____	_____	_____	_____
4. Employed Since	_____	_____	_____	_____
5. Experience	_____	_____	_____	_____
6. Previous Employment	_____	_____	_____	_____
7. Education	_____	_____	_____	_____
8. PRC License	_____	_____	_____	_____

Required Attachments during Postqualification:

1. Valid PRC License of the (professional) personnel
2. Certificate of Training with accreditation from DATE of the Construction Safety and Health Officer
3. TESDA Training Certificate (WC II) of Welder or Electrician, whichever is applicable
4. Copy of Diploma and/or Service Record/Certificate of Employment of previous and/or current employer of Foreman, Welder, Plumber or Electrician, whichever is applicable shall be submitted during post qualification by the winning bidder

Submitted by: _____
(Printed name & Signature)

Designation: _____
Date: _____

One of the requirements from the bidder to be included in its Technical Envelope is a list of contractor's key personnel (based on the minimum key personnel required in the bidding documents) to be assigned to the contract to be bid, with their complete qualification and experience data (including the key personnel's signed written commitment to work for the project once awarded the contract).

KEY PERSONNEL'S CERTIFICATE OF EMPLOYMENT (PROFESSIONAL PERSONNEL)

Issuance Date

THE VICE PRESIDENT National Power Corporation Mindanao Generation Marla Cristina, Iligan City

Dear Sir:

I am (Name of Nominee) a Licensed Engineer with Professional License No. issued on (date of issuance) at (place of issuance)

I hereby certify that (Name of Bidder) Has engaged my services as (Designation) for the (Name of Project), if awarded to it.

As (Designation), I supervised the following completed projects Similar to the contract under bidding:

Table with 4 columns: NAME OF PROJECT, OWNER, COST, DATE COMPLETED

At present, I am supervising the following projects:

Table with 4 columns: NAME OF PROJECT, OWNER, COST, DATE COMPLETED

In case of my separation for any reason whatsoever from the above-mentioned Contractor, I shall notify the National Power Corporation at least twenty one (21) days before the effective date of separation.

As (Designation), I know I will have to stay in the job site all the time to supervise and manage the Contract works to the best of my ability, and aware that I am authorized to handle only one (1) contract at a time.

One of the requirements from the bidder to be included in its Technical Envelope is a list of contractor's key personnel (viz, Project Manager, Project Engineer, Safety & Health Practitioner, Foremen, etc.), to be assigned to the contract to be bid, with their complete qualification and experience data (including the key personnel's signed written commitment to work for the project once awarded the contract).

I do not allow the use of my name for the purpose of enabling the above-mentioned Contractor to qualify for the Contract without any firm commitment on my part to assume the post of (Designation) therefore, if the contract is awarded to him since I understand that to do so will be a sufficient ground for my disqualification as (Designation) in any future National Power Corporation bidding or employment with any Contractor doing business with the National Power Corporation.

(Name and Signature)
AFFIANT

REPUBLIC OF THE PHILIPPINES)
City/Municipality of _____)S.S.

SUBSCRIBED AND SWORN TO before me this _____, day of _____20____,
affiant exhibiting to me his/her Community Tax Certificate No. _____ issued on
_____ at _____, Philippines.

Notary Public
Until 31 December 20 _____
PTR No. _____
Issued at: _____
Issued on: _____
TIN No. _____

Doc. No. _____
Page No. _____
Book No. _____
Series of _____

One of the requirements from the bidder to be included in its Technical Envelope is a list of contractor's key personnel (viz. Project Manager, Project Engineer, Safety & Health Practitioner, Foremen, etc.), to be assigned to the contract to be bid, with their complete qualification and experience data (including the key personnel's signed written commitment to work for the project once awarded the contract).

**KEY PERSONNEL'S CERTIFICATE OF EMPLOYMENT
(CONSTRUCTION SAFETY AND HEALTH PRACTITIONER)**

Issuance Date

THE VICE PRESIDENT
National Power Corporation
Mindanao Generation
Maria Cristina, Iligan City

Dear Sir:

I am (Name of Nominee) a Licensed _____ Engineer with
Professional License No. _____ Issued on _____ at _____
(date of issuance) (place
of issuance)

I hereby certify that (Name of Bidder) Has engaged my services as
(Designation) for the (Name of Project), If awarded to it.

As (Designation), I supervised the following completed projects
Similar to the contract under bidding:

NAME OF PROJECT	OWNER	COST	DATE COMPLETED
_____	_____	_____	_____
_____	_____	_____	_____
_____	_____	_____	_____

At present, I am supervising the following projects:

NAME OF PROJECT	OWNER	COST	DATE COMPLETED
_____	_____	_____	_____
_____	_____	_____	_____
_____	_____	_____	_____

In case of my separation for any reason whatsoever from the above-mentioned Contractor, I shall notify the National Power Corporation at least twenty one (21) days before the effective date of separation.

As Safety and Health Practitioner, I know I will have to stay in the job site all the time and aware that I am authorized to handle only one (1) contract at a time.

One of the requirements from the bidder to be included in its Technical Envelope is a list of contractor's key personnel (viz Project Manager, Project Engineer, Safety & Health Practitioner, Foremen, etc.), to be assigned to the contract to be bid, with their complete qualification and experience data (including the key personnel's signed written commitment to work for the project once awarded the contract).

I do not allow the use of my name for the purpose of enabling the above-mentioned Contractor to qualify for the Contract without any firm commitment on my part to assume the post of Safety and Health Practitioner, if the contract is awarded to him since I understand that to do so will be a sufficient ground for my disqualification as Safety and Health Practitioner in any future National Power Corporation bidding or employment with any Contractor doing business with the National Power Corporation.

(Name and Signature)
AFFIANT

REPUBLIC OF THE PHILIPPINES)
City/Municipality of _____) S.S.

SUBSCRIBED AND SWORN TO before me this _____, day of _____ 20____,
affiant exhibiting to me his/her Community Tax Certificate No. _____ issued on
_____ at _____, Philippines.

Notary Public
Until 31 December 20 _____
PTR No. _____
Issued at: _____
Issued on: _____
TIN No. _____

Doc. No. _____
Page No. _____
Book No. _____
Series of _____

One of the requirements from the bidder to be included in its Technical Envelope is a list of contractor's key personnel (viz. Project Manager, Project Engineer, Safety & Health Practitioner, Foremen, etc.), to be assigned to the contract to be bid, with their complete qualification and experience data (including the key personnel's signed written commitment to work for the project once awarded the contract).

**KEY PERSONNEL
(FORMAT OF BIO-DATA)**

Give the detailed information of the following personnel who are scheduled to be assigned as full-time staff for the project. Fill up a form for each person.

- 1. Name : _____
 - 2. Date of Birth : _____
 - 3. Nationality : _____
 - 4. Education and Degrees : _____
 - 5. Specialty : _____
 - 6. Registration : _____
 - 7. Length of Service with the Firm : _____
- | | | | |
|------|-------|----------|--------------|
| Year | | | |
| from | _____ | (months) | _____ (year) |
| To | _____ | (months) | _____ (year) |
- 8. Years of Experience : _____

9. If item 7 is less than the required number of years stated in BDS Section III- ITB Clause 10.4, give name and length of service with previous employers to satisfy the required number of years of experience within the last ten (10) years (attached additional sheet/s), if necessary:

<u>Name and Address of Employer</u>	<u>Length of Service</u>
	Year(s) from _____ to _____
	Year(s) from _____ to _____
	Year(s) from _____ to _____

10. Experience:

This should cover the past ten (10) years of experience. (Attached as many pages as necessary to show involvement of personnel in projects using the format below).

One of the requirements from the bidder to be included in its Technical Envelope is a list of contractor's key personnel (viz Project Manager, Project Engineer, Safety & Health Practitioner, Foremen, etc.), to be assigned to the contract to be bid, with their complete qualification and experience data (including the key personnel's signed written commitment to work for the project once awarded the contract).

- 1. Name : _____
- 2. Name and Address of Owner : _____
- 3. Name and Address of the Owner's Engineer (Consultant) : _____
- 4. Indicate the Features of Project (particulars of the project components and any other particular interest connected with the project) : _____
- 5. Contract Amount Expressed in Philippine Currency : _____
- 6. Position : _____
- 7. Structures for which the employee was responsible : _____
- 8. Assignment Period : from _____ (months) _____ (years)
to _____ (months) _____ (years)

Name and Signature of Employee

It is hereby certified that the above personnel can be assigned to this project, if the contract is awarded to our company.

(Place and Date)

(The Authorized Representative)

One of the requirements from the bidder to be included in its Technical Envelope is a list of contractor's key personnel (viz. Project Manager, Project Engineer, Safety & Health Practitioner, Foremen, etc.), to be assigned to the contract to be bid, with their complete qualification and experience data (including the key personnel's signed written commitment to work for the project once awarded the contract).

BID DOCUMENTS

NAME OF PROJECT: Construction of Wharf with Integrated 702 Mast
Elevation Marker at Brgy. Lumbacawato, Gallindong,
Lanao del Sur

**SECTION IX- CHECKLIST OF TECHNICAL AND
FINANCIAL DOCUMENTS**

PR NO./REF. NO.: MG-COM22-020/INFR2022-CDD-039

Standard Form Number: NPCM/GMSF-INFR - 08

**LIST OF EQUIPMENT, OWNED OR LEASED AND/OR UNDER PI
(Based on the Minimum Equipment Required in the Bid**

Business Name : _____
Business : _____

Description	Model/Year	Capacity/ Performance / Size	Plate No.	Motor No. / Body No.
A. Owned				
i.				
ii.				
iii.				
iv.				
B. Leased				
i.				
ii.				
iii.				
iv.				
C. Under Purchased Agreements				
i.				
ii.				
iii.				
iv.				

Submitted by: _____ (printed name & signature)

Designation: _____
Date: _____

One of the requirements from the bidder to be included in its Technical Envelope is the list of its equipment units pledged for the contract which are owned (supported by proofs of ownership), leased, and/or under purchase agreements (with corresponding engine numbers, availability of equipment from the equipment lessor/vendor for the duration of the project.

Omnibus Sworn Statement (Revised) (SOLE PROPRIETORSHIP)

REPUBLIC OF THE PHILIPPINES)
CITY/MUNICIPALITY OF _____) S.S.

AFFIDAVIT

I, [Name of Affiant], of legal age, [Civil Status], [Nationality], and residing at [Address of Affiant], after having been duly sworn in accordance with law, do hereby depose and state that:

1. I am the sole proprietor or authorized representative of [Name of Bidder] with office address at [address of Bidder];
2. As the owner and sole proprietor, or authorized representative of [Name of Bidder], I have full power and authority to do, execute and perform any and all acts necessary to participate, submit the bid, and to sign and execute the ensuing contract for [Name of the Project] of the National Power Corporation-Mindanao Generation, as shown in the attached duly notarized Special Power of Attorney;
3. [Name of Bidder] is not "blacklisted" or barred from bidding by the Government of the Philippines or any of its agencies, offices, corporations, or Local Government Units, foreign government/foreign or international financing institution whose blacklisting rules have been recognized by the Government Procurement Policy Board, by itself or by relation, membership, association, affiliation, or controlling interest with another blacklisted person or entity as defined and provided for in the Uniform Guidelines on Blacklisting;
4. Each of the documents submitted in satisfaction of the bidding requirements is an authentic copy of the original, complete, and all statements and information provided therein are true and correct;
5. [Name of Bidder] is authorizing the Head of the Procuring Entity or its duly authorized representative(s) to verify all the documents submitted;
6. The owner or sole proprietor is not related to the Head of the Procuring Entity, members of the Bids and Awards Committee (BAC), the Technical Working Group, and the BAC Secretariat, the head of the Project Management Office or the end-user unit, and the project consultants by consanguinity or affinity up to the third civil degree;
7. [Name of Bidder] complies with existing labor laws and standards; and
8. [Name of Bidder] is aware of and has undertaken the responsibilities as a Bidder in compliance with the Philippine Bidding Documents, which includes:
 - a. Carefully examining all of the Bidding Documents;
 - b. Acknowledging all conditions, local or otherwise, affecting the implementation of the Contract;

- c. Making an estimate of the facilities available and needed for the contract to be bid, if any; and
 - d. Inquiring or securing Supplemental/Bid Bulletin(s) issued for the *[Name of the Project]*.
9. *[Name of Bidder]* did not give or pay directly or indirectly, any commission, amount, fee, or any form of consideration, pecuniary or otherwise, to any person or official, personnel or representative of the government in relation to any procurement project or activity.
10. In case advance payment was made or given, failure to perform or deliver any of the obligations and undertakings in the contract shall be sufficient grounds to constitute criminal liability for Swindling (Estafa) or the commission of fraud with unfaithfulness or abuse of confidence through misappropriating or converting any payment received by a person or entity under an obligation involving the duty to deliver certain goods or services, to the prejudice of the public and the government of the Philippines pursuant to Article 315 of Act No. 3815 s. 1930, as amended, or the Revised Penal Code.

IN WITNESS WHEREOF, I have hereunto set my hand this ___ day of ___, 20__ at _____, Philippines.

[Insert NAME OF BIDDER OR ITS AUTHORIZED REPRESENTATIVE]
[Insert signatory's legal capacity]
Affiant

[Jurat]
[Format shall be based on the latest Rules on Notarial Practice]

Standard Form No: NPCMGNSF-INFR-09b

Omnibus Sworn Statement (Revised)
PARTNERSHIP/COOP/CORP/JOINT VENTURE

REPUBLIC OF THE PHILIPPINES)
CITY/MUNICIPALITY OF _____) S.S.

AFFIDAVIT

I, [Name of Affiant], of legal age, [Civil Status], [Nationality], and residing at [Address of Affiant], after having been duly sworn in accordance with law, do hereby depose and state that:

1. I am the duly authorized and designated representative of [Name of Bidder] with office address at [address of Bidder];
2. I am granted full power and authority to do, execute and perform any and all acts necessary to participate, submit the bid, and to sign and execute the ensuing contract for [Name of the Project] of the National Power Corporation-Mindanao Generation, as shown in the attached [state title of attached document showing proof of authorization (e.g., duly notarized Secretary's Certificate, Board/Partnership Resolution, or Special Power of Attorney, whichever is applicable)];
3. [Name of Bidder] is not "blacklisted" or barred from bidding by the Government of the Philippines or any of its agencies, offices, corporations, or Local Government Units, foreign government/foreign or international financing institution whose blacklisting rules have been recognized by the Government Procurement Policy Board, by itself or by relation, membership, association, affiliation, or controlling interest with another blacklisted person or entity as defined and provided for in the Uniform Guidelines on Blacklisting;
4. Each of the documents submitted in satisfaction of the bidding requirements is an authentic copy of the original, complete, and all statements and information provided therein are true and correct;
5. [Name of Bidder] is authorizing the Head of the Procuring Entity or its duly authorized representative(s) to verify all the documents submitted;
6. *[If a partnership or cooperative:]* None of the officers and members of [Name of Bidder]'s related to the Head of the Procuring Entity, members of the Bids and Awards Committee (BAC), the Technical Working Group, and the BAC Secretariat, the head of the Project Management Office or the end-user unit, and the project consultants by consanguinity or affinity up to the third civil degree;

[If a corporation or joint venture:] None of the officers, directors, and controlling stockholders of [Name of Bidder]'s related to the Head of the Procuring Entity, members of the Bids and Awards Committee (BAC), the Technical Working Group, and the BAC Secretariat, the head of the Project Management Office or the end-user unit, and the project consultants by consanguinity or affinity up to the third civil degree;

Standard Form No: NPCMGNSF-INFR-09b

7. *[Name of Bidder]* complies with existing labor laws and standards; and
8. *[Name of Bidder]* is aware of and has undertaken the responsibilities as a Bidder in compliance with the Philippine Bidding Documents, which includes:
 - a. Carefully examining all of the Bidding Documents;
 - b. Acknowledging all conditions, local or otherwise, affecting the implementation of the Contract;
 - c. Making an estimate of the facilities available and needed for the contract to be bid, if any; and
 - d. Inquiring or securing Supplemental/Bid Bulletin(s) issued for the *[Name of the Project]*.
9. *[Name of Bidder]* did not give or pay directly or indirectly, any commission, amount, fee, or any form of consideration, pecuniary or otherwise, to any person or official, personnel or representative of the government in relation to any procurement project or activity.
10. In case advance payment was made or given, failure to perform or deliver any of the obligations and undertakings in the contract shall be sufficient grounds to constitute criminal liability for Swindling (Estafa) or the commission of fraud with unfaithfulness or abuse of confidence through misappropriating or converting any payment received by a person or entity under an obligation involving the duty to deliver certain goods or services, to the prejudice of the public and the government of the Philippines pursuant to Article 315 of Act No. 3815 s. 1930, as amended, or the Revised Penal Code.

IN WITNESS WHEREOF, I have hereunto set my hand this ___ day of ___, 20__ at _____, Philippines.

[Insert NAME OF BIDDER OR ITS AUTHORIZED REPRESENTATIVE]
[Insert signatory's legal capacity]
 Affiant

[Jurat]
[Format shall be based on the latest Rules on Notarial Practice]

Standard Form No: NPCMGNSF-INFR-10

NET FINANCIAL CONTRACTING CAPACITY (NFCC)

- A. Summary of the Bidder's/Contractor's assets and liabilities on the basis of the income tax return and audited financial statement for the immediately preceding calendar year are:

		Year 20
1.	Total Assets	
2.	Current Assets	
3.	Total Liabilities	
4.	Current Liabilities	
5.	Net Worth (1-3)	
6.	Net Working Capital (2-4)	

- B. The Net Financial Contracting Capacity (NFCC) based on the above data is computed as follows:

NFCC = [(Current assets minus current liabilities) x 15] minus the value of all outstanding or uncompleted portions of the projects under ongoing contracts, including awarded contracts yet to be started coinciding with the contract for this Project.

NFCC – P _____

Herewith attached is certified true copy of the audited financial statement, stamped "RECEIVED" by the BIR or BIR authorized collecting agent for the immediately preceding calendar year.

Submitted by:

Name of Bidder/Contractor

Signature of Authorized Representative

Date: _____

JOINT VENTURE AGREEMENT

KNOW ALL MEN BY THESE PRESENTS:

That this JOINT VENTURE AGREEMENT is entered in to by and between: _____ of legal age, (civil status), authorized representative of _____ and a resident of _____.

- and -

_____ of legal age, (civil status), authorized representative of _____ and a resident of _____.

That both parties agree to join together their capital, manpower, equipment, and other resources and efforts to enable the Joint Venture to participate in the Bidding and Undertaking of the hereunder stated Contract of the National Power Corporation.

NAME OF FIRM

CAPITAL CONTRIBUTION

That the capital contribution of each member firm:

NAME OF FIRM

CAPITAL CONTRIBUTION

- | | |
|---|-----|
| 1 | DHD |
| 2 | PHD |

That both parties agree to be jointly and severally liable for their participation in the Bidding and Undertaking of the said contract.

That both parties agree that _____ and/or _____ shall be the Official Representative/s of the Joint Venture, and are granted full power and authority to do, execute and perform any and all acts necessary and/or to represent the Joint Venture in the Bidding and Undertaking of the said contract, as fully and effectively and the Joint Venture may do and if personally present with full power of substitution and revocation.

That this Joint Venture Agreement shall remain in effect only for the above stated Contract until terminated by both parties.

Name & Signature of Authorized Representative	Name & Signature of Authorized Representative
Official Designation	Official Designation
Name of Firm	Name of Firm

Witnesses

If the bidder is a joint venture, one of the requirements is the submission of a valid joint venture agreement.

ACKNOWLEDGEMENT

BEFORE ME, a Notary Public for and in _____, Philippines, this _____ day of _____, 20____, personally appeared _____, authorized representative, of _____ with Community Tax Certificate No. _____, issued at _____, on _____, AND _____ authorized representative, of _____ with Community Tax Certificate No. _____, issued at _____, on _____, known to me to be the same person who executed the foregoing instrument consisting of two (2) pages, including the page whereon the acknowledgements are written, all pages signed by both parties and their instrumental witnesses and they acknowledged before me that the same are their free and voluntary acts and deeds and that of the Corporations they represents.

WITNESS MY HAND AND NOTARIAL SEAL, at the place and on the date first above written.

Notary Public
Until 31 December 20 _____
PTR No. _____
Issued at: _____
Issued on: _____
TIN No. _____

Doc. No. _____
Page No. _____
Book No. _____
Series of _____

If the bidder is a joint venture, one of the requirements is the submission of a valid joint venture agreement.
Standard Form No: NPCMGNSF-INFR-12

Bid Form for the Procurement of Infrastructure Projects**BID FORM**

Date : _____

Project Identification No. : _____

To: **The Vice President**
National Power Corporation
Mindanao Generation
Maria Cristina, Iligan City

Having examined the Philippine Bidding Documents (PBDs) including the Supplemental or Bid Bulletin Numbers [insert numbers], the receipt of which is hereby duly acknowledged, we, the undersigned, declare that:

- a. We have no reservation to the PBDs, including the Supplemental or Bid Bulletins, for the Procurement Project: [insert name of contract];
- b. We offer to execute the Works for this Contract in accordance with the PBDs;
- c. The total price of our Bid in words and figures, excluding any discounts offered below is: [insert information];
- d. The discounts offered and the methodology for their application are: [insert information];
- e. The total bid price includes the cost of all taxes, such as, but not limited to: [specify the applicable taxes, e.g. (i) value added tax (VAT), (ii) income tax, (iii) local taxes, and (iv) other fiscal levies and duties], which are itemized herein and reflected in the detailed estimates,
- f. Our Bid shall be valid within the a period stated in the PBDs, and it shall remain binding upon us at any time before the expiration of that period;
- g. If our Bid is accepted, we commit to obtain a Performance Security in the amount of [insert percentage amount] percent of the Contract Price for the due performance of the Contract, or a Performance Securing Declaration in lieu of the the allowable forms of Performance Security, subject to the terms and conditions of issued GPPB guidelines¹ for this purpose;
- h. We are not participating, as Bidders, in more than one Bid in this bidding process, other than alternative offers in accordance with the Bidding Documents;
- i. We understand that this Bid, together with your written acceptance thereof included in your notification of award, shall constitute a binding contract between us, until a formal Contract is prepared and executed; and

Standard Form No: NPCMGNSF-INFR-12

Page 2 of 2

¹ currently based on GPPB Resolution No. 09-2020

- j. We understand that you are not bound to accept the Lowest Calculated Bid or any other Bid that you may receive.

- k. We likewise certify/confirm that the undersigned, is the duly authorized representative of the bidder, and granted full power and authority to do, execute and perform any and all acts necessary to participate, submit the bid, and to sign and execute the ensuing contract for the [Name of Project] of the National Power Corporation-Mindanao Generation.

- l. We acknowledge that failure to sign each and every page of this Bid Form, including the Bill of Quantities, shall be a ground for the rejection of our bid.

Name: _____

Legal Capacity: _____

Signature: _____

Duly authorized to sign the Bid for and behalf of: _____

Date: _____

BID DOCUMENTS

NAME OF PROJECT: Construction of Wharf with Integrated 702 Maat
Elevation Markor at Brgy. Lumbacawato, Balipdong,
Lanao del Sur

SECTION IX- CHECKLIST OF TECHNICAL AND
FINANCIAL DOCUMENTS

PR NO/REF. NO.: MG-COM23-020/INFR2022-CDD-030

Standard Form Number : NPCMGNMF-IVFR - 13

DETAILED COST ESTIMATE FORM

Name of Bidders : _____

Item No.	Item Description	Unit of Measure	Direct Cost			Mark-Up	
			Materials	Labor	Equipment	OCM	P

Name, Signature of Authorized Representative

Standard Form No; NPCMGNSF-INFR-14

**SUMMARY SHEETS OF MATERIALS PRICES, LABOR RATES AND
 EQUIPMENT RENTAL RATES**

Name of Bidder: _____

I. Unit Prices of Materials

Materials Description	Unit	Unit Price
-----------------------	------	------------

II. Manpower Hourly Rates

Designation	Rate/Hr.
-------------	----------

III. Equipment Hourly Rental Rates

Equipment Description	Rental Rate/Hr.
-----------------------	-----------------

 Name, Signature of Authorized Representative

 Designation

Performance Securing Declaration (Revised)

[if used as an alternative performance security but it is not required to be submitted with the Bid, as it shall be submitted within ten (10) days after receiving the Notice of Award]

REPUBLIC OF THE PHILIPPINES)
CITY OF _____) S.S.

PERFORMANCE SECURING DECLARATION

Invitation to Bid: [Insert Reference Number indicated in the Bidding Documents]
To: [Insert name and address of the Procuring Entity]

I/We, the undersigned, declare that:

1. I/We understand that, according to your conditions, to guarantee the faithful performance by the supplier/distributor/manufacturer/contractor/consultant of its obligations under the Contract, I/we shall submit a Performance Securing Declaration within a maximum period of ten (10) calendar days from the receipt of the Notice of Award prior to the signing of the Contract.
2. I/We accept that: I/we will be automatically disqualified from bidding for any procurement contract with any procuring entity for a period of one (1) year for the first offense, or two (2) years **for the second offense**, upon receipt of your Blacklisting Order if I/We have violated my/our obligations under the Contract;
3. I/We understand that this Performance Securing Declaration shall cease to be valid upon:
 - a. Issuance by the Procuring Entity of the Certificate of Final Acceptance, subject to the following conditions:
 - i. Procuring Entity has no claims filed against the contract awardee;
 - ii. It has no claims for labor and materials filed against the contractor; and
 - iii. Other terms of the contract; or
 - b. replacement by the winning bidder of the submitted PSD with a performance security in any of the prescribed forms under Section 39.2 of the 2016 revised IRR of RA No. 9184 as required by the end-user.

IN WITNESS WHEREOF, I/We have hereunto set my/our hand/s this ____ day of [month] [year] at [place of execution].

*[Insert NAME OF BIDDER OR ITS
AUTHORIZED REPRESENTATIVE]
[Insert signatory's legal capacity]
Affiant*

[Jurat]

[Format shall be based on the latest Rules on Notarial Practice]

Contract Agreement Form for the Procurement of Infrastructure Projects (Revised)

[not required to be submitted with the Bid, but it shall be submitted within ten (10) days after receiving the Notice of Award]

CONTRACT AGREEMENT

THIS AGREEMENT, made this *[insert date]* day of *[insert month]*, *[insert year]* between *[name and address of PROCURING ENTITY]* (hereinafter called the "Entity") and *[name and address of Contractor]* (hereinafter called the "Contractor").

WHEREAS, the Entity is desirous that the Contractor execute *[name and identification number of contract]* (hereinafter called "the Works") and the Entity has accepted the Bid for *[contract price in words and figures in specified currency]* by the Contractor for the execution and completion of such Works and the remedying of any defects therein.

NOW THIS AGREEMENT WITNESSETH AS FOLLOWS:

1. In this Agreement, words and expressions shall have the same meanings as are respectively assigned to them in the Conditions of Contract hereinafter referred to.
2. The following documents as required by the 2016 revised Implementing Rules and Regulations of Republic Act No. 9184 shall be deemed to form and be read and construed as part of this Agreement, viz.:
 - a. Philippine Bidding Documents (PBDs);
 - i. Drawings/Plans;
 - ii. Specifications;
 - iii. Bill of Quantities;
 - iv. General and Special Conditions of Contract;
 - v. Supplemental or Bid Bulletins, if any;
 - b. Winning bidder's bid, including the Eligibility requirements, Technical and Financial Proposals, and all other documents or statements submitted;

Bid form, including all the documents/statements contained in the Bidder's bidding envelopes, as annexes, and all other documents submitted (e.g., Bidder's response to request for clarifications on the bid), including corrections to the bid, if any, resulting from the Procuring Entity's bid evaluation;

- c. Performance Security;
- d. Notice of Award of Contract and the Bidder's conforme thereto; and
- e. Other contract documents that may be required by existing laws and/or the Procuring Entity concerned in the PBDs. **Winning bidder agrees that additional contract documents or information prescribed by the GPPB that are subsequently required for submission after the contract execution, such as the Notice to Proceed, Variation Orders, and Warranty Security, shall likewise form part of the Contract.**

3. In consideration for the sum of *[total contract price in words and figures]* or such other sums as may be ascertained, *[Named of the bidder]* agrees to *[state the object of the contract]* in accordance with his/her/its Bid.
4. The *[Name of the procuring entity]* agrees to pay the above-mentioned sum in accordance with the terms of the Bidding.

IN WITNESS whereof the parties thereto have caused this Agreement to be executed the day and year first before written.

[Insert Name and Signature]

[Insert Name and Signature]

[Insert Signatory's Legal Capacity]

[Insert Signatory's Legal Capacity]

for:

for:

[Insert Procuring Entity]

[Insert Name of Supplier]

Acknowledgment

[Format shall be based on the latest Rules on Notarial Practice]

Republic of the Philippines



Government Procurement Policy Board